



6. VILLAGE OF ATTICA

This jurisdictional annex to the Genesee County Hazard Mitigation Plan (HMP) provides information to assist public and private sectors in the Village of Attica with reducing losses from future hazard events. This annex is not guidance of what to do when a disaster occurs; its focus is on actions that can be implemented prior to a disaster to reduce or eliminate damage to property and people. The annex presents a general overview of Attica, describes who participated in the planning process, assesses Attica's risk, vulnerability, and capabilities, and outlines a strategy for achieving a more resilient community.

6.1 HAZARD MITIGATION PLANNING TEAM

The Village of Attica identified primary and alternate HMP points of contact and developed this plan over the course of several months, with input from many Village departments. The Village Administrator represented the community on the Genesee County HMP Planning Partnership and supported the local planning process by securing input from persons with specific knowledge to enhance the plan. All departments were asked to contribute to the annex development through reviewing and contributing to the capability assessment, reporting on the status of previously identified actions, and participating in action identification and prioritization.

Table 6-1 summarizes Village officials who participated in the development of the annex and in what capacity. Additional documentation of the Village's planning activities through Planning Partnership meetings is included in Volume I.

Table 6-1. Hazard Mitigation Planning Team

Primary Point of Contact	Alternate Point of Contact
Name/Title: Brenda J Beck, Administrator Address: 9 Water Street, Attica, NY 14011 Phone Number: 585-591-0898 Email: brenda@attica.org	Name/Title: Nathan Montford, Mayor Address: 9 Water Street, Attica, NY 14011 Phone Number: 585-356-4170 Email: nathan.montford@attica.org
National Flood Insurance Program Floodplain Administrator	
Name/Title: Matthew Sage, Village Board Member Address: 9 Water Street, Attica, NY 14011 Phone Number: 585-356-1593 Email: Matthew.sage@attica.org	

6.2 COMMUNITY PROFILE

Located in the southcentral region of Genesee County, the Village is surrounded by the Town of Alexander. The Village of Attica is located within the Town of Attica in Wyoming County. The Village of Attica had initial settlement as early as 1802, though it was incorporated in 1811. Within Wyoming County, the Town and Village of Attica is situated between the Town of Bennington to its west and the Town of Middlebury to its east. The Towns of Orangeville and Sheldon are south of the Town of Attica. State Highways 238 and 98 intersect within the Village of Attica.

Research has shown that some populations are at greater risk from hazard events because of decreased resources or physical abilities. These populations can be more susceptible to hazard events based on a number of factors including their physical and financial ability to react or respond during a hazard, and the location and construction



quality of their housing. Data from the 2022 American Community Survey indicates that 5.2 percent of the population is 5 years of age or younger, 19.1 percent is 65 years of age or older, 1.3 percent is non-English speaking, 6.9 percent is below the poverty threshold, and 9.9 percent is considered disabled.

6.3 JURISDICTIONAL CAPABILITY ASSESSMENT AND INTEGRATION

Attica performed an inventory and analysis of existing capabilities, plans, programs, and policies that enhance its ability to implement mitigation strategies. Volume I describes the components included in the capability assessment and their significance for hazard mitigation planning. The jurisdictional assessment for this annex includes analyses of the following:

- Planning and regulatory capabilities
- Development and permitting capabilities
- Administrative and technical capabilities
- Fiscal capabilities
- Education and outreach capabilities
- Classification under various community mitigation programs
- Adaptive capacity to withstand hazard events

For a community to succeed in reducing long-term risk, hazard mitigation must be integrated into day-to-day local government operations. As part of the hazard mitigation analysis, planning and /policy documents were reviewed and each jurisdiction was surveyed to obtain a better understanding of their progress toward plan integration. Development of an updated mitigation strategy provided an opportunity for Attica to identify opportunities for integrating mitigation concepts into ongoing Village procedures.

6.3.1 Planning and Regulatory Capability and Integration

Table 6-2 summarizes the planning and regulatory tools that are available to Attica.

Table 6-2. Planning and Regulatory Capability and Integration

	Jurisdiction has this? (Yes/No)	Citation and Date (code chapter or name of plan, date of enactment or plan adoption)	Authority (local, county, state, federal)	Responsible Person, Department or Agency
CODES, ORDINANCES, & REGULATIONS				
Building Code	No	-	-	-
How has or will this be integrated with the HMP and how does this reduce risk?				
Zoning/Land Use Code	Yes	Chapter 62 – Zoning	Local	Code Enforcement
How has or will this be integrated with the HMP and how does this reduce risk?				
The Zoning Ordinance is adopted to promote and protect the public health, safety and general welfare and provide for solar access. The Zoning Ordinance is also a tool to implement the goals and objectives of the Village of Attica Comprehensive Plan.				
Subdivision Code	No	-	-	-
How has or will this be integrated with the HMP and how does this reduce risk?				



	Jurisdiction has this? (Yes/No)	Citation and Date (code chapter or name of plan, date of enactment or plan adoption)	Authority (local, county, state, federal)	Responsible Person, Department or Agency
Site Plan Code	Yes	Chapter 62 – Zoning, Article 63 – Site Plan Review	Local	Planning Board
How has or will this be integrated with the HMP and how does this reduce risk? The intent of the site plan review process is to preserve and enhance the character of a neighborhood, achieve compatibility with adjacent development, mitigate potentially negative impacts on traffic, parking, drainage and similar environmental concerns, improve the overall visual and aesthetic quality of the Village, and increase the capability of the Zoning Ordinance to adapt to a variety of unique circumstances.				
Stormwater Management Code	No	-	-	-
How has or will this be integrated with the HMP and how does this reduce risk?				
Post-Disaster Recovery/ Reconstruction Code	No	-	-	-
How has or will this be integrated with the HMP and how does this reduce risk?				
Real Estate Disclosure Requirements	Yes	Property Condition Disclosure Act, NY Code - Article 14 §460-467	State	NYS Department of State, Real Estate Agent
How has or will this be integrated with the HMP and how does this reduce risk? In addition to facing potential liability for failing to disclose under the exceptions to “caveat emptor,” a home seller must make certain disclosures under the law or pay a credit of \$500 to the buyer at closing. While the PCDA requires a seller to complete a standardized disclosure statement and deliver it to the buyer before the buyer signs the final purchase contract, in practice, most home sellers in New York opt not to complete the statement and instead pay the credit.				
Growth Management	No	-	-	-
How has or will this be integrated with the HMP and how does this reduce risk?				
Environmental Protection Ordinance(s)	Yes	Chapter 55 – Trees	Local	Tree Board
How has or will this be integrated with the HMP and how does this reduce risk? It is the purpose and intent of this chapter to promote and protect the public health, safety and general welfare by providing for the regulation of the planting, maintenance and removal of trees within the Village of Attica which are on Village property or within the right-of-way of any public street. It is also the purpose of this chapter to establish and maintain diversity of tree species and maximize tree canopy cover through tree planning and preservation.				
Flood Damage Prevention Ordinance	Yes	Chapter 23 – Flood Damage Prevention	Local	Village Board
How has or will this be integrated with the HMP and how does this reduce risk? Promotes public health, safety, and general welfare, and to minimize public and private losses due to flood conditions in specific areas. A. Regulate uses which are dangerous to health, safety and property due to water or erosion hazards or which result in damaging increases in erosion or in flood heights or velocities. B. Require that uses vulnerable to floods, including facilities which serve such uses, be protected against flood damage at the time of initial construction. C. Control the alteration of natural floodplains, stream channels and natural protective barriers which are involved in the accommodation of floodwaters. D. Control filling, grading, dredging and other development which may increase erosion or flood damages. E. Regulate the construction of flood barriers which will unnaturally divert floodwaters, or which may increase flood hazards to other lands. F. Qualify for and maintain participation in the National Flood Insurance Program.				
Wellhead Protection	No	-	-	-
How has or will this be integrated with the HMP and how does this reduce risk?				



	Jurisdiction has this? (Yes/No)	Citation and Date (code chapter or name of plan, date of enactment or plan adoption)	Authority (local, county, state, federal)	Responsible Person, Department or Agency
Emergency Management Ordinance How has or will this be integrated with the HMP and how does this reduce risk?	No	-	-	-
Climate Change Ordinance How has or will this be integrated with the HMP and how does this reduce risk?	No	-	-	-
Other How has or will this be integrated with the HMP and how does this reduce risk?	No	-	-	-
PLANNING DOCUMENTS				
General/Comprehensive Plan How has or will this be integrated with the HMP and how does this reduce risk? The Village is currently updating its 2003 Comprehensive Plan, with an anticipated completion date of May 31, 2025, using funds from the Smart Growth Comprehensive Planning Grant Program. The plan will provide a vision supported by goals and strategies that will address future land use, zoning, development, parks/open space, infrastructure, neighborhoods, and government services. An implementation plan will be included in the plan to provide timeframes and responsibilities for each strategy. The plan will focus on downtown revitalization, neighborhoods, infrastructure, and resiliency.	Yes	Comprehensive Plan, 2003	Local	Planning Board
Capital Improvement Plan How has or will this be integrated with the HMP and how does this reduce risk? The Village of Attica will use \$47,500 in NYS CDBG Community Planning funds with a \$2,500 cash match to complete the Capital Improvement Plan. The capital improvement plan identifies needed capital improvement projects and costs; prioritizes and provides a schedule for the projects; and identifies funding sources and financing options.	Yes	Capital Improvement Plan, 2017	Local	Village Board
Disaster Debris Management Plan How has or will this be integrated with the HMP and how does this reduce risk?	No	-	-	-
Floodplain Management or Watershed Plan How has or will this be integrated with the HMP and how does this reduce risk? The purpose of a flood mitigation plan is to reduce or eliminate potential flood damage. It aims to minimize the impact of disasters and protect lives and property.	Yes	Genesee & Wyoming Counties Joint Flood Mitigation Plan, Village of Attica; 2003	Local, County	Genesee/Finger Lakes Regional Planning Council (G/FLRPC) and Town and Village of Attica Hazard Planning Committee
Stormwater Management Plan How has or will this be integrated with the HMP and how does this reduce risk?	No	-	-	-
Open Space Plan How has or will this be integrated with the HMP and how does this reduce risk?	No	-	-	-



	Jurisdiction has this? (Yes/No)	Citation and Date (code chapter or name of plan, date of enactment or plan adoption)	Authority (local, county, state, federal)	Responsible Person, Department or Agency
Urban Water Management Plan	No	-	-	-
How has or will this be integrated with the HMP and how does this reduce risk?				
Habitat Conservation Plan	No	-	-	-
How has or will this be integrated with the HMP and how does this reduce risk?				
Economic Development Plan	No	-	-	-
How has or will this be integrated with the HMP and how does this reduce risk?				
Community Wildfire Protection Plan	No	-	-	-
How has or will this be integrated with the HMP and how does this reduce risk?				
Community Forest Management Plan	Yes	Community Forest Management Plan, 2020	Local	Village Tree Board
How has or will this be integrated with the HMP and how does this reduce risk?				
This document presents the results of the complete tree inventory as well as data analysis and proposed goals and the actions required to meet those goals. This management plan is comprised of 4 components and additional appendices.				
The Village of Attica recognizes the inherent value of the urban forest and seeks to preserve, and end enhance it as proper stewards of this resource. The Village also acknowledges the duty to properly manage the urban forest so it can continue to benefit its citizens and visitors. The Community Forest Management Plan is a collaborative effort developed to guide the Village and its citizens in a proactive management program for a period of 5 years, as well as a firm foundation for the future.				
Transportation Plan	No	-	-	-
How has or will this be integrated with the HMP and how does this reduce risk?				
Agriculture Plan	No	-	-	-
How has or will this be integrated with the HMP and how does this reduce risk?				
Climate Action/ Resilience/Sustainability Plan	No	-	-	-
How has or will this be integrated with the HMP and how does this reduce risk?				
Tourism Plan	No	-	-	-
How has or will this be integrated with the HMP and how does this reduce risk?				
Business/ Downtown Development Plan	No	-	-	-
How has or will this be integrated with the HMP and how does this reduce risk?				
Other	No	-	-	-
How has or will this be integrated with the HMP and how does this reduce risk?				



	Jurisdiction has this? (Yes/No)	Citation and Date (code chapter or name of plan, date of enactment or plan adoption)	Authority (local, county, state, federal)	Responsible Person, Department or Agency
RESPONSE/RECOVERY PLANNING				
Comprehensive Emergency Management Plan How has or will this be integrated with the HMP and how does this reduce risk?	No	-	-	-
Continuity of Operations Plan How has or will this be integrated with the HMP and how does this reduce risk?	No	-	-	-
Substantial Damage Response Plan How has or will this be integrated with the HMP and how does this reduce risk?	No	-	-	-
Threat and Hazard Identification and Risk Assessment How has or will this be integrated with the HMP and how does this reduce risk?	No	-	-	-
Post-Disaster Recovery Plan How has or will this be integrated with the HMP and how does this reduce risk?	No	-	-	-
Public Health Plan How has or will this be integrated with the HMP and how does this reduce risk?	No	-	-	-
Other How has or will this be integrated with the HMP and how does this reduce risk?	No	-	-	-

6.3.2 Development and Permitting Capability

Table 6-3 summarizes the capabilities of Attica to oversee and track development.

Table 6-3. Development and Permitting Capability

	Yes/No	Comment
Do you issue development permits? <ul style="list-style-type: none">If you issue development permits, what department is responsible?If you do not issue development permits, what is your process for tracking new development?	Yes	Zoning
Are permits tracked by hazard area? (For example, floodplain development permits.)	Yes	Floodplain
Do you have a buildable land inventory? <ul style="list-style-type: none">If you have a buildable land inventory, please describe	No	-



	Yes/No	Comment
Describe the level of buildout in your jurisdiction.	N/A	The Village is nearly built out, although there may be available vacant parcels for development.

6.3.3 Administrative and Technical Capability

Table 6-4 summarizes potential staff and personnel resources available to Attica and their current responsibilities that contribute to hazard mitigation.

Table 6-4. Administrative and Technical Capabilities

Resources	Available? (Yes/No)	Comment (available staff, responsibilities, support of hazard mitigation)
ADMINISTRATIVE CAPABILITY		
Planning Board	Yes	The Planning & Zoning Board reviews proposed amendments to zoning ordinances, site plans and plat applications, and also makes recommendations to the Village Board regarding the current and future development of the Village of Attica.
Zoning Board of Adjustment	No	-
Planning Department	No	-
Mitigation Planning Committee	No	-
Environmental Board/Commission	No	-
Open Space Board/Committee	No	-
Economic Development Commission/Committee	No	-
Public Works/Highway Department	Yes	All roads within the Village of Attica including Colony Run (Village of Attica, Town of Alexander) are maintained and plowed by the Attica Village Department of Public Works.
Construction/Building/Code Enforcement Department	Yes	The Code Enforcement Division helps to protect the Village of Attica public's well-being and enhance the quality of life by enforcing the health, safety, zoning and sanitation codes.
Emergency Management/Public Safety Department	Yes	The Village of Attica emergency services is prepared 24/7 to preserve life and minimize damage, respond to hazards or disaster events by providing the necessary assistance and emergency support functions as well as establish a recovery system that will return the community to its normal state of affairs.
Maintenance programs to reduce risk (stormwater maintenance, tree trimming, etc.)	Yes	Attica's DPW works with the community to identify issues and mitigate risk. They also work with local tree services in order to execute tree work that requires specialized equipment and expertise. They also are active with tree planting projects and Arbor Day celebrations, as well as the establishment and maintenance of the village trees. DPW currently manages the small ash tree population for emerald ash borer by injecting susceptible trees with a registered pesticide.
Mutual aid agreements	No	-



Resources	Available? (Yes/No)	Comment (available staff, responsibilities, support of hazard mitigation)
Human Resources Manual - Do any job descriptions specifically include identifying or implementing mitigation projects or other efforts to reduce natural hazard risk?	No	-
Other: Village Tree Board	Yes	The Village has an active Tree Board with a total of 7 members, including an ISA certified arborist.
TECHNICAL/STAFFING CAPABILITY		
Planners or engineers with knowledge of land development and land management practices	No	-
Engineers or professionals trained in building or infrastructure construction practices	No	-
Planners or engineers with an understanding of natural hazards	No	-
Staff with expertise or training in benefit/cost analysis	No	-
Professionals trained in conducting damage assessments	No	-
Personnel skilled or trained in GIS and/or Hazus applications	No	-
Staff that work with socially vulnerable populations or underserved communities	No	-
Environmental scientists familiar with natural hazards	No	-
Surveyors	No	-
Emergency manager	No	-
Grant writers	No	-
Resilience Officer	No	-
Other (this could include stormwater engineer, environmental specialist, etc.)	No	-

6.3.4 Fiscal Capability

Table 6-5 summarizes financial resources available to Attica.

Table 6-5. Fiscal Capabilities

Financial Resources	Accessible or Eligible to Use? (Yes/No)
Community Development Block Grants (CDBG, CDBG-DR)	No
Capital improvement project funding	Yes
Authority to levy taxes for specific purposes	Yes
User fees for water, sewer, gas, or electric service	Yes



Financial Resources	Accessible or Eligible to Use? (Yes/No)
Impact fees for homebuyers or developers of new development/homes	No
Stormwater utility fee	No
Incur debt through general obligation bonds	Yes
Incur debt through special tax bonds	No
Incur debt through private activity bonds	No
Withhold public expenditures in hazard-prone areas	No
Other federal or state funding programs	No
Open Space Acquisition funding programs	No
Other (for example, Clean Water Act 319 Grants [Nonpoint Source Pollution])	No

6.3.5 Education and Outreach Capability

Table 6-6 summarizes the education and outreach resources available to Attica.

Table 6-6. Education and Outreach Capabilities

Outreach Resources	Available? (Yes/No)	Comment
Public information officer or communications office	No	-
Personnel skilled or trained in website development	No	-
Hazard mitigation information available on your website	No	-
Social media for hazard mitigation education and outreach	No	-
Citizen boards or commissions that address issues related to hazard mitigation	No	-
Warning systems for hazard events	Yes	Siren
Natural disaster/safety programs in place for schools	No	-
Organizations that conduct outreach to socially vulnerable populations and underserved populations	No	-
Public outreach mechanisms / programs to inform citizens on natural hazards, risk, and ways to protect themselves during such events	No	-

6.3.6 Community Classifications

Table 6-7 summarizes classifications for community programs available to Attica.

Table 6-7. Community Classifications

Program	Participating? (Yes/No)	Classification	Date Classified
Community Rating System (CRS)	No	-	-
Building Code Effectiveness Grading Schedule (BCEGS)	No	-	-
Public Protection (ISO Fire Protection Classes 1 to 10)	No	-	-
National Weather Service StormReady Certification	No	-	-



Program	Participating? (Yes/No)	Classification	Date Classified
Firewise Communities classification	No	-	-
New York State Climate Smart Communities	Yes	Not Ranked	-
Other: Organizations with mitigation focus (advocacy group, non-government)	No	-	-

N/A = Not applicable

— = Unavailable

6.3.7 Adaptive Capacity

Adaptive capacity is defined as “the ability of systems, institutions, humans and other organisms to adjust to potential damage, to take advantage of opportunities, or respond to consequences” (IPCC 2022). Each jurisdiction has a unique combination of capabilities to adjust to, protect from, and withstand a future hazard event, future conditions, and changing risk. Table 6-8 summarizes the adaptive capacity for each identified hazard of concern and the Village’s capability to address related actions using the following classifications:

- Strong: Capacity exists and is in use.
- Moderate: Capacity might exist; but is not used or could use some improvement.
- Weak: Capacity does not exist or could use substantial improvement

Table 6-8. Adaptive Capacity

Hazard	Adaptive Capacity - Strong/Moderate/Weak
Civil Unrest	Moderate
Dam Failure	Moderate
Drought	Moderate
Earthquake	Moderate
Epidemic	Moderate
Extreme Temperature	Moderate
Flood	Moderate
Hazardous Materials	Moderate
Severe Storm	Moderate
Severe Winter Storm	Moderate
Terrorism	Moderate
Transportation Accidents	Moderate
Utility Interruption	Moderate
Wildfire	Moderate

6.4 NATIONAL FLOOD INSURANCE PROGRAM COMPLIANCE

This section provides specific information on the management and regulation of the regulatory floodplain, including current and future compliance with the National Flood Insurance Program (NFIP). The floodplain administrator listed in Table 6-1 is responsible for maintaining this information.



6.4.1 NFIP Statistics

Table 6-9 summarizes the NFIP policy and claim statistics for Attica.

Table 6-9. Attica NFIP Summary of Policy and Claim Statistics

# Policies	5
# Claims (Losses)	70
Total Loss Payments	\$1,053,909.00
# Repetitive Loss Properties	6
# Severe Repetitive Loss Properties	2

NFIP Definition of Repetitive Loss: The NFIP defines a repetitive loss property as any insurable building for which two or more claims of more than \$1,000 were paid by the NFIP within any rolling 10-year period since 1978.

FMA Definition of Repetitive Loss: FEMA's Flood Mitigation Assistance (FMA) program defines a repetitive loss property as any insurable building that has incurred flood-related damage on two occasions, in which the cost of the repair, on average, equaled or exceeded 25 percent of the market value of the structure at the time of each such flood event.

Definition of Severe Repetitive Loss: A residential property covered under an NFIP flood insurance policy and: (a) That has at least four NFIP claim payments over \$5,000 each, and the cumulative amount of such claims payments exceeds \$20,000; or (b) For which at least two separate claims payments have been made with the cumulative amount of the building portion of such claims exceeding the market value of the building. At least two of the claims must have occurred within any 10-year period, more than 10 days apart.

Source: FEMA 2018

Note: FEMA was only able to provide aggregate Repetitive Loss Claim Data to support this Hazard Mitigation Plan update. For this reason, NFIP summary data in this plan update is sourced from the previous 2019 Hazard Mitigation Plan.

6.4.2 Flood Vulnerability Summary

Table 6-10 provides a summary of the NFIP program in Attica.

Table 6-10. NFIP Summary

NFIP Topic	Comments
Flood Vulnerability Summary	
Describe areas prone to flooding in your jurisdiction.	Areas near Tonawanda Creek
Do you maintain a list of properties that have been damaged by flooding?	No
Do you maintain a list of property owners interested in flood mitigation?	No
How many homeowners and/or business owners are interested in mitigation (elevation or acquisition)?	Unknown
Are any RiskMAP projects currently underway in your jurisdiction? If so, state what projects are underway.	No
How do you make Substantial Damage determinations?	Unknown
How many Substantial Damage determinations were declared for recent flood events in your jurisdiction?	None



NFIP Topic	Comments
How many properties have been mitigated (elevation or acquisition) in your jurisdiction? If there are mitigation properties, how were the projects funded?	None
Do your flood hazard maps adequately address the flood risk within your jurisdiction? If not, state why.	Flood maps may not accurately show the flood risk. FEMA flood maps are currently being revised across the County.
NFIP Compliance	
What local department is responsible for floodplain management?	Village Board
Are any certified floodplain managers on staff in your jurisdiction?	No
Do you have access to resources to determine possible future flooding conditions from climate change?	Yes – FEMA, State, County, and regional resources.
Does your floodplain management staff need any assistance or training to support its floodplain management program? If so, what type of assistance/training is needed?	Yes, training.
Provide an explanation of NFIP administration services you provide (e.g., permit review, GIS, education/outreach, inspections, engineering capability)	Permit review
How do you determine if proposed development on an existing structure would qualify as a substantial improvement?	If the development would increase the structure's value by 50% or more of its existing value.
What are the barriers to running an effective NFIP program in the community, if any?	Staffing, funding, and time.
Does your jurisdiction have any outstanding NFIP compliance violations that need to be addressed? If so, state the violations.	No
When was the most recent Community Assistance Visit (CAV) or Community Assistance Contact (CAC)?	CAC: October 14, 2009 CAV: October 22, 2020
What is the local law number or municipal code of your flood damage prevention ordinance?	Chapter 23 – Flood Damage Prevention
What is the date that your flood damage prevention ordinance was last amended?	April 6, 1987
Does your floodplain management program meet or exceed minimum requirements? If exceeds, in what ways?	The program meets the minimum requirements.
Are there other local ordinances, plans or programs (e.g., site plan review) that support floodplain management and meeting the NFIP requirements? For instance, does the planning board or zoning board consider efforts to reduce flood risk when reviewing variances such as height restrictions?	The planning and zoning board consider efforts to reduce flood risk. The board also conducts site plan review.
Does your community plan to join the CRS program or is your community interested in improving your CRS classification?	No

6.5 GROWTH/DEVELOPMENT TRENDS

Understanding how past, current, and projected development patterns have or are likely to increase or decrease risk in hazard areas is a key component to appreciating a jurisdiction's overall risk to its hazards of concern. Recent



and expected future development trends, including major residential/commercial development and major infrastructure development, are summarized in Table 6-11 through Table 6-13.

Table 6-11. Number of Building Permits for New Construction Issued Since the Previous HMP

	New Construction Permits Issued			
	Single Family	Multi-Family	Other (commercial, mixed-use, etc.)	Total
2016				
Total Permits	-	-	-	-
Permits within SFHA	-	-	-	-
2017				
Total Permits	-	-	-	-
Permits within SFHA	-	-	-	-
2018				
Total Permits	-	-	-	-
Permits within SFHA	-	-	-	-
2019				
Total Permits	-	-	-	-
Permits within SFHA	-	-	-	-
2020				
Total Permits	-	-	-	-
Permits within SFHA	-	-	-	-
2021				
Total Permits	-	-	-	-
Permits within SFHA	-	-	-	-
2022				
Total Permits	-	-	-	-
Permits within SFHA	-	-	-	-
2023				
Total Permits	-	-	-	-
Permits within SFHA	-	-	-	-
2024				
Total Permits	-	-	-	-
Permits within SFHA	-	-	-	-

SFHA = Special Flood Hazard Area (1% flood event)

Note: Permitting information was not available during the time of this plan update.

**Table 6-12. Recent Major Development and Infrastructure from 2016 to Present**

Property or Development Name	Type of Development	# of Units / Structures	Location (address and/or block and lot)	Known Hazard Zones*	Description / Status of Development
None Identified					

** Only location-specific hazard zones or vulnerabilities identified.*

Table 6-13. Known or Anticipated Major Development and Infrastructure in the Next Five Years

Property or Development Name	Type of Development	# of Units / Structures	Location (address and/or block and lot)	Known Hazard Zones*	Description / Status of Development
None Anticipated					

6.6 JURISDICTIONAL RISK ASSESSMENT

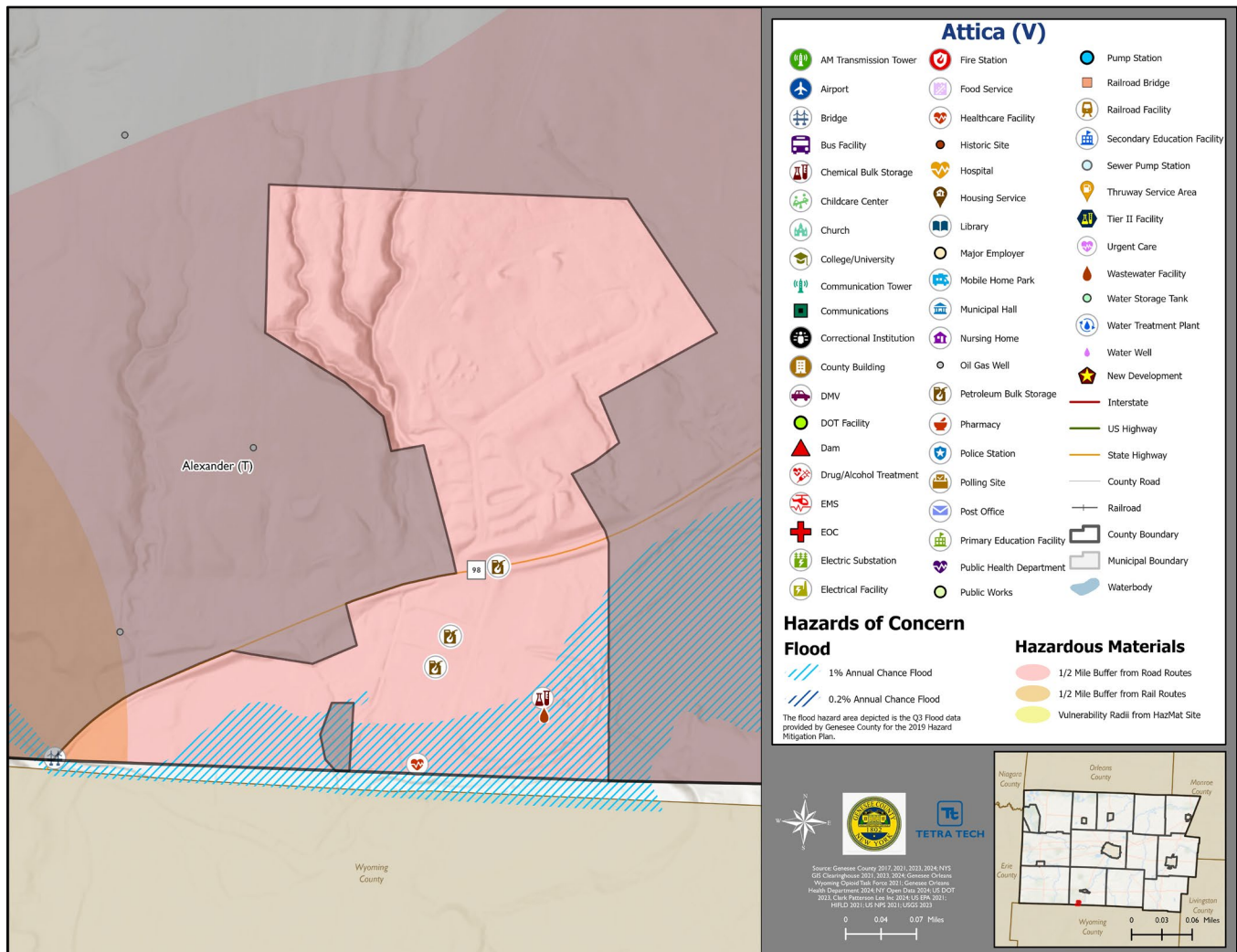
The hazard profiles in Volume I provide detailed information regarding each planning partner's vulnerability to the identified hazards, including summaries of Attica's risk assessment results and data used to determine the hazard ranking. Key local risk assessment information is presented below.

6.6.1 Hazard Area

Hazard area maps provided below illustrate the probable hazard areas impacted within the Village are shown in Figure 6-1 through Figure 6-2. These maps are based on the best available data at the time of the preparation of this plan and are adequate for planning purposes. Maps are provided only for hazards that can be identified clearly using mapping techniques and technologies and for which Attica has significant exposure. The maps show the location of potential new development, where available.



Figure 6-1. Attica Hazard Area Extent and Location Map 1





Attica (V)

- AM Transmission Tower
- Airport
- Bridge
- Bus Facility
- Chemical Bulk Storage
- Childcare Center
- Church
- College/University
- Communication Tower
- Communications
- Correctional Institution
- County Building
- DMV
- DOT Facility
- Dam
- Drug/Alcohol Treatment
- EMS
- EOC
- Electric Substation
- Electrical Facility
- Fire Station
- Food Service
- Healthcare Facility
- Historic Site
- Hospital
- Housing Service
- Library
- Major Employer
- Mobile Home Park
- Municipal Hall
- Nursing Home
- Oil Gas Well
- Petroleum Bulk Storage
- Pharmacy
- Police Station
- Polling Site
- Post Office
- Primary Education Facility
- Public Health Department
- Public Works
- Pump Station
- Railroad Bridge
- Railroad Facility
- Secondary Education Facility
- Sewer Pump Station
- Thruway Service Area
- Tier II Facility
- Urgent Care
- Wastewater Facility
- Water Storage Tank
- Water Treatment Plant
- Water Well
- New Development
- Interstate
- US Highway
- State Highway
- County Road
- Railroad
- County Boundary
- Municipal Boundary
- Waterbody

Hazards of Concern

Wildland Urban Interface/Intermix

- Intermix
- Interface

NEHRP Soils

- D Soils
- E Soils

Source: Genesee County GIS Data 2017-2023, 2018 VLS GIS Clearinghouse 2021, 2023, 2024; Orleans Wyoming Critical Risk Force 2023; Genesee Orleans Health Department 2024; US EPA 2024; US DOT 2023; Clark Patterson Lee Inc. 2024; US EPA 2021; NHD 2021; USGS 2021; USGS 2023.

Scale: 0 0.04 0.07 Miles

Legend:

- North Arrow
- Genesee County Seal
- Tetra Tech Logo
- Map of Wyoming showing county boundaries and locations of Niagara, Orleans, Monroe, Livingston, and Wyoming counties.



6.6.2 Hazard Event History

The history of natural and non-natural hazard events in Attica is detailed in Volume I, where each hazard profile includes a chronology of historical events that have affected the County and its municipalities. Table 6-14 provides details on loss and damage in Attica during hazard events since the last hazard mitigation plan update.

Table 6-14. Hazard Event History in Attica

Dates of Event	Event Type (Disaster Declaration)	County Designated?	Summary of Event	Summary of Damage and Losses
February 15-16, 2016	N/A	N/A	Heavy snow accumulations occurred in Central New York, with portions of Genesee County reporting up to 14 inches of snow.	Road clearing.
March 8, 2017	N/A	N/A	Strong winds caused widespread power outages in Genesee County. Trees and power lines were downed. Power poles were snapped. The strong winds derailed a train in Batavia (Genesee County). Twelve out of thirty-one freight cars were blown off the tracks. 76-mile per hour winds were recorded in Genesee County. Minor injuries were reported to drivers in Alexander. Winds damaged several buildings.	Power outages and trees downed.
January 30-31, 2019	N/A	N/A	Extreme cold temperatures were recorded in Genesee County, combined with wind gusts of between 35 to 50 miles per hour, wind chills dropped to as low as -26 degrees Fahrenheit.	No damages or losses incurred.
January 20, 2020 - May 11, 2023	DR-4480-NY and EM-3434-NY, Biological	Yes	The coronavirus pandemic resulted in roughly 19,956 positive cases and the deaths of 211 County residents as of August 20, 2024.	Adhered to distancing and masking mandates.
November 18, 2022 – November 21, 2022	EM-3589-NY, Winter Storm	Yes	A lake effect storm occurred and dropped multiple feet of snow in western New York.	Road clearing.
December 23, 2022 – December 28, 2022	DR-4694-NY and EM-3590-NY, Winter Storm	Yes	A historic lake effect blizzard occurred northeast of Lake Erie and Lake Ontario during the Christmas holiday weekend. The combination of high winds in excess of 70 mph and heavy lake effect snow resulted in devastating impacts across western New York.	Road clearing.



Dates of Event	Event Type (Disaster Declaration)	County Designated?	Summary of Event	Summary of Damage and Losses
July 10, 2024	N/A	N/A	The remnants of Tropical Storm Beryl impacted the County through the production of severe thunderstorms, heavy rains, strong winds, downed trees and power lines, and a confirmed EF-0 tornado in the Towns of Darien and Alexander.	No damages or losses incurred.
July 15, 2024	N/A	N/A	Strong thunderstorm developed and produced strong winds, heavy rain, and hail resulting in downed trees and power lines. The storms also produced an EF-0 tornado in the Town of Pavilion and flooded roadways, including NYS Route 5 where five feet of water accumulated at a railroad overpass in Le Roy.	No damages or losses incurred.

EM = Emergency Declaration (FEMA)

FEMA = Federal Emergency Management Agency

DR = Major Disaster Declaration (FEMA)

N/A = Not applicable

6.6.3 Hazard Ranking and Vulnerabilities

The hazard profiles in Volume I have detailed information regarding each planning partner's vulnerability to the identified hazards. The following presents key risk assessment results for Attica.

Hazard Ranking

The participating jurisdictions have differing degrees of vulnerability to the hazards of concern, so each jurisdiction ranked its own degree of risk to each hazard. The community-specific hazard ranking is based on problems and impacts identified by the risk assessment presented in Volume I. The ranking process involves an assessment of the likelihood of occurrence for each hazard; the potential impacts of the hazard on people, property, and the economy; community capabilities to address the hazard; and changing future climate conditions. Attica reviewed the County hazard ranking and individual results to assess the relative risk of the hazards of concern to the community. During the review of the hazard ranking, the Village indicated the following:

- The Village decreased its Civil Unrest hazard ranking from 'Low' to 'No Risk' as it does not have a large population or sites which an event would be likely to occur.
- The Village decreased its Dam Failure hazard ranking from 'Low' to 'No Risk' as there are no dams in the jurisdiction or near the jurisdiction which would impact people or properties.
- The Village has decreased its Earthquake hazard ranking from 'Low' to 'No Risk' as there are minimal NEHRP soils in the jurisdiction and based on the lack of historical events.
- The Village decreased its Hazardous Materials hazard ranking from 'Medium' to 'Low' as there is only one major road which traverses through the jurisdiction.
- The Village decreased its Terrorism hazard ranking from 'Low' to 'No Risk' as it does not have locations likely to be targeted for such an event to occur.



- The Village decreased its Transportation Accidents hazard ranking from 'High' to 'Low' as there is only one major road which traverses through the jurisdiction.

Table 6-15 shows Attica's final hazard rankings for identified hazards of concern. Mitigation action development uses the ranking to target hazards with the highest risk.

Table 6-15. Hazard Ranking

Hazard	Rank
Civil Unrest	No Risk
Dam Failure	No Risk
Drought	Medium
Earthquake	No Risk
Epidemic	Medium
Extreme Temperature	Medium
Flood	Low
Hazardous Materials	Low
Severe Storm	High
Severe Winter Storm	High
Terrorism	No Risk
Transportation Accidents	Low
Utility Interruption	High
Wildfire	Low

Note: The scale is based on the hazard rankings established in Volume I, modified as appropriate based on review by the jurisdiction

Critical Facilities

Table 6-16 identifies critical facilities in the community located in the 1 percent and 0.2 percent annual chance floodplains.

Table 6-16. Critical Facilities Flood Vulnerability

Name	Type	Vulnerability		Addressed by Proposed Action	Already Protected to 0.2% Flood Level (describe protections)
		1% Event	0.2% Event		
Attica Wastewater Treatment Plant	Chemical Bulk Storage, Wastewater Facility	X	X	2025-AtticaV-01	-
Rochester Regional Health / United Memorial Community Care - Attica Family Medicine	Healthcare Facility	X	X	2025-AtticaV-01	-

Source: Genesee County 2017, 2021, 2023, 2024; NYS GIS Clearinghouse 2021, 2023, 2024; Genesee Orleans Wyoming Opioid Task Force 2021; Genesee Orleans Health Department 2024; NY Open Data 2024; US DOT 2023, Clark Patterson Lee Inc 2024; US EPA 2021; HIFLD 2021; US NPS 2021; USGS 2023



6.6.4 Identified Issues

After a review of Attica's hazard event history, hazard rankings, hazard location, and current capabilities, Attica identified the following vulnerabilities within the community:

- Critical facilities need to be protected to the 500-year flood level. There are three facilities located in the Village identified to be in the flood hazard area:
 - Attica Wastewater Treatment Plant
 - Rochester Regional Health / United Memorial Community Care - Attica Family Medicine
 - Attica Fire Department
 - Attica Government Hall
- The area surrounding Tonawanda Creek is prone to flooding, impacting nearby roads and properties, in particular Prospect Street. Tonawanda Creek has bank erosion issues, threatening encroachment onto nearby roads. Creek banks become eroded due to heavy rains from severe storms, degradation from flood waters and compacted snow and ice from severe winter storms. Stabilization measures, such as including gabions, riprap, drainpipes and/or related improvements, should be considered to prevent flooding. Additional flood mitigation measures may also be considered.
- The Village does not have a Substantial Damage Management Plan in place, nor do they have a formal process in place when conducting substantial damage determinations. The Village is in need of a formal process and plan to provide a framework for conducting such inspections and determinations.
- The Village faces risk from epidemic but does not have a comprehensive education and outreach program to educate residents and businesses about hazard mitigation, preparation, response, and recovery utilizing a variety of outreach methods. The Village does not currently have hazard mitigation information and outreach on the Village website.
- The Village may be impacted by drought, as potable water wells could become depleted by unnecessary use. Drought puts a strain on agriculture, recreational use, and daily use of water. The Village does not have a water conservation ordinance to encourage and support water conservation efforts. Extreme temperatures may enhance the impacts of drought by causing the rapid evaporation of moisture from potable wells and floral and fauna.
- The Village has one major road which traverses through the jurisdiction, NYS Route 98. Transportation accidents are apt to occur on this roadway more than local roads. Further, hazardous materials may be transported on the major roadway or the rail which goes through the center of the Village. The Village does not have a Comprehensive Emergency Management Plan (CEMP). Hazard mitigation and transportation accident principles need to be integrated into the CEMP. A CEMP establishes the overall authority, roles, and functions performed during incidents. Incorporating hazard mitigation principles into a CEMP ensures hazard risk is identified.
- The current flood damage prevention ordinance does not include the 2-foot mandated NYS freeboard requirements. While the existing ordinance may be compliant with NFIP requirements, State requirements which exceed NFIP requirements must be adhered to.
- The Village and the Town of Attica do not have procedures developed and documented to detail emergency response in hazard events, including natural, technological, and human caused.
- The Village faces risk from wildfires but does not have a comprehensive education and outreach program to educate residents and businesses about hazard mitigation, preparation, response, and recovery utilizing a variety of outreach methods. The Village does not currently have hazard mitigation information and outreach on the Village website.



- Frequent flooding events have resulted in damages to residential properties. These properties have been repetitively flooded as documented by paid NFIP claims. The Village has 6 repetitive loss properties and 2 severe repetitive loss properties, but other properties may be impacted by flooding as well.

6.7 MITIGATION STRATEGY AND PRIORITIZATION

This section discusses the status of mitigation actions from the previous HMP, describes proposed hazard mitigation actions, and prioritizes actions to address over the next five years.

6.7.1 Past Mitigation Action Status

Table 6-17 indicates progress on the Village's mitigation strategy identified in the 2019 HMP. Actions that are still recommended but not completed or that are in progress are carried forward and combined with new actions as part of the mitigation strategy for this plan update. Previous actions that are now ongoing programs and capabilities are indicated as such and are presented in the capability assessment earlier in this annex.

6.7.2 Additional Mitigation Efforts

Attica did not identify any additional mitigation efforts completed since the last HMP.



Table 6-17. Status of Previous Mitigation Actions

Project Number	Project Name	Hazard(s) Addressed	Responsible Party	Brief Summary of the Original Problem and the Solution (Project)	Action Review 1. Status (In Progress, Ongoing Capability, No Progress, Complete) 2. Provide a narrative to describe progress or obstacles that have prevented implementation	Next Steps 1. Project to be included in the 2025 HMP or Discontinue 2. If including action in the 2025 HMP, revise/reword to be more specific (as appropriate). 3. If discontinue, explain why.
2021-Village of Attica-001	Attica Fire Department Flood Protection	Flood	Engineer, Fire Department	<p>Problem: The Attica Fire Department is located in the special flood hazard area.</p> <p>Solution: The village will conduct a feasibility assessment to determine what additional floodproofing measures are needed at the Attica Fire Department to protect each to the 500-year flood level. Options include:</p> <ul style="list-style-type: none">• Elevation of facility• Floodproofing of facility• Mobile flood barriers <p>Once the most cost-effective option is identified, the village will carry out the option.</p>	1. No Progress 2. Financial constraints	1. Include 2. Not applicable 3. Not applicable
2021-Village of Attica-002	Flood Damage Prevention Ordinance	Flood	NFIP Floodplain Administrator, Administration	<p>Problem: The village lacks an updated flood damage prevention ordinance.</p> <p>Solution: The village will adopt an updated flood damage prevention ordinance to meet state and federal NFIP standards.</p>	1. No Progress 2. Village prioritized other projects	1. Include 2. Not applicable 3. Not applicable
2021-Village of Attica-003	Attica Government Hall Flood Protection	Flood	Engineer	<p>Problem: The Attica Government Hall is located in the special flood hazard area.</p> <p>Solution: The village will conduct a feasibility assessment to determine what additional floodproofing</p>	1. No Progress 2. Financial constraints	1. Include 2. Not applicable 3. Not applicable



Project Number	Project Name	Hazard(s) Addressed	Responsible Party	Brief Summary of the Original Problem and the Solution (Project)	Action Review 1. Status (In Progress, Ongoing Capability, No Progress, Complete) 2. Provide a narrative to describe progress or obstacles that have prevented implementation	Next Steps 1. Project to be included in the 2025 HMP or Discontinue 2. If including action in the 2025 HMP, revise/reword to be more specific (as appropriate). 3. If discontinue, explain why.
				measures are needed at the Attica Government Hall to protect each to the 500-year flood level. Options include: <ul style="list-style-type: none">• Elevation of facility• Floodproofing of facility• Mobile flood barriers Once the most cost-effective option is identified, the village will carry out the option.		
2021-Village of Attica-004	Joint Local Command Center	All Hazards	Administration	<p>Problem: Emergency response in hazard events should be coordinated between the village and the town.</p> <p>Solution: The village will work with the town to set up a joint local command center for the Town and Village of Attica.</p>	1. No Progress 2. Village prioritized other projects	1. Include 2. Not applicable 3. Not applicable
2021-Village of Attica-005	Streambank Stabilization at Prospect Street	Flood, Severe Storm	Highway Department/Public Works, Wyoming County Highway Department, SWCD	<p>Problem: Streambank stabilization is needed along several roads in the county. In Attica, Prospect St. is a particular concern.</p> <p>Solution: The village will work conduct a feasibility assessment to determine the potential streambank stabilization. The village will then implement the identified actions.</p>	1. No Progress 2. Financial constraints	1. Include 2. Not applicable 3. Not applicable



6.7.3 Proposed Hazard Mitigation Actions for the HMP Update

Attica participated in the mitigation strategy workshop for this HMP to identify appropriate actions to include in a local hazard mitigation strategy. Its comprehensive consideration of all possible activities to address hazards of concern included review of the following FEMA documents:

- FEMA 551 “Selecting Appropriate Mitigation Measures for Floodprone Structures” (March 2007)
- FEMA “Mitigation Ideas—A Resource for Reducing Risk to Natural Hazards” (January 2013).

The action worksheets included at the end of this annex list the mitigation actions that Attica would like to pursue in the future to reduce the effects of hazards. The actions are dependent upon available funding (grants and local match availability) and may be modified or omitted at any time based on the occurrence of new hazard events and changes in Village priorities.

Table 6-18 indicates the range of proposed mitigation action categories. The four FEMA mitigation action categories and the six CRS mitigation action categories are listed in the table to further demonstrate the wide range of activities and mitigation measures selected.

Volume I identifies 14 evaluation criteria for prioritizing the mitigation actions. To assist with rating each mitigation action as high, medium, or low priority, a numeric rank is assigned (-1, 0, or 1) for each of the evaluation criteria. Table 6-19 provides a summary of the prioritization of all proposed mitigation actions for the HMP update.



Table 6-18. Analysis of Mitigation Actions by Hazard and Category

Hazard	Actions That Address the Hazard, by Action Category									
	FEMA				CRS					
	LPR	SIP	NSP	EAP	PR	PP	PI	NR	SP	ES
Civil Unrest										
Dam Failure										
Drought	X				X					X
Earthquake										
Epidemic	X			X			X			X
Extreme Temperature	X				X					X
Flood	X	X	X		X			X	X	X
Hazardous Materials	X									X
Severe Storm	X		X		X			X		X
Severe Winter Storm	X		X		X			X		X
Terrorism										
Transportation Accidents	X									X
Utility Interruption	X		X					X		X
Wildfire	X			X	X		X			X

Local Plans and Regulations (LPR)—These actions include government authorities, policies or codes that influence the way land and buildings are being developed and built.

Structure and Infrastructure Project (SIP)—These actions involve modifying existing structures and infrastructure to protect them from a hazard or remove them from a hazard area. This could apply to public or private structures as well as critical facilities and infrastructure. This type of action also involves projects to construct structures to reduce the impact of hazards.

Natural Systems Protection (NSP)—These are actions that minimize damage and losses and preserve or restore the functions of natural systems.

Education and Awareness Programs (EAP)—These are actions to inform and educate citizens, elected officials, and property owners about hazards and potential ways to mitigate them. These actions may also include participation in national programs, such as StormReady and Firewise Communities

Preventative Measures (PR)—Government, administrative or regulatory actions, or processes that influence the way land and buildings are developed and built. Examples include planning and zoning, floodplain local laws, capital improvement programs, open space preservation, and storm water management regulations.

Property Protection (PP)—These actions include public activities to reduce hazard losses or actions that involve (1) modification of existing buildings or structures to protect them from a hazard or (2) removal of the structures from the hazard area. Examples include acquisition, elevation, relocation, structural retrofits, storm shutters, and shatter-resistant glass.

Public Information (PI)—Actions to inform and educate citizens, elected officials, and property owners about hazards and potential ways to mitigate them. Such actions include outreach projects, real estate disclosure, hazard information centers, and educational programs for school-age children and adults.

Natural Resource Protection (NR)—Actions that minimize hazard loss and preserve or restore the functions of natural systems. These actions include sediment and erosion control, stream corridor restoration, watershed management, forest and vegetation management, and wetland restoration and preservation.

Structural Flood Control Projects (SP)—Actions that involve the construction of structures to reduce the impact of a hazard. Such structures include dams, setback levees, floodwalls, retaining walls, and safe rooms.

Emergency Services (ES)—Actions that protect people and property during and immediately following a disaster or hazard event. Services include warning systems, emergency response services, and the protection of essential facilities



Table 6-19. Summary of Prioritization of Actions

Project Number	Project Name	Scores for Evaluation Criteria															High / Medium / Low
		Life Safety	Property Protection	Cost-Effectiveness	Political	Legal	Fiscal	Environmental	Social Vulnerability	Administrative	Hazards of Concern	Climate Change	Timeline	Community Lifelines	Other Local Objectives	Total	
2025-AtticaV-01	Critical Facility Protection	1	1	1	1	1	1	0	1	1	1	0	1	1	0	11	High
2025-AtticaV-02	Tonawanda Creek Erosion	1	1	1	1	0	0	1	1	1	1	1	1	0	1	11	High
2025-AtticaV-03	Substantial Damage Management Plan	1	1	1	1	1	1	0	1	1	1	1	0	1	1	12	High
2025-AtticaV-04	Epidemic Education and Outreach	1	1	1	1	1	1	0	1	1	0	1	1	0	1	11	High
2025-AtticaV-05	Water Conservation Ordinance	1	1	1	1	1	1	1	1	1	1	1	1	1	0	13	High
2025-AtticaV-06	Comprehensive Emergency Management Plan	1	1	1	1	1	1	0	1	1	1	0	1	1	0	11	High
2025-AtticaV-07	Flood Damage Prevention Ordinance Update	1	1	1	1	1	1	1	1	1	1	1	1	0	0	12	High
2025-AtticaV-08	Shared Service Agreement for Emergency Response	1	1	1	1	1	0	1	1	1	1	1	1	1	1	13	High
2025-AtticaV-09	Wildfire Education and Outreach	1	1	1	1	1	1	0	1	1	0	1	1	0	1	11	High
2025-AtticaV-10	Repetitive Loss Properties	1	1	1	1	1	0	1	1	1	0	1	1	0	1	11	High

Note: Volume I, Section 22 (Mitigation Strategy) conveys guidance on prioritizing mitigation actions. Low (0-6), Medium (7-10), High (11-14).



Action 2025-AtticaV-01. Critical Facility Protection

Lead Agency:	Critical Facility Owners and Managers																
Supporting Agencies:	Village Board																
Hazard(s) of Concern:	<table><tr><td><input type="checkbox"/> Civil Unrest</td><td><input type="checkbox"/> Hazardous Materials</td></tr><tr><td><input type="checkbox"/> Dam Failure</td><td><input type="checkbox"/> Severe Storm</td></tr><tr><td><input type="checkbox"/> Drought</td><td><input type="checkbox"/> Severe Winter Storm</td></tr><tr><td><input type="checkbox"/> Earthquake</td><td><input type="checkbox"/> Terrorism</td></tr><tr><td><input type="checkbox"/> Epidemic</td><td><input type="checkbox"/> Transportation Accidents</td></tr><tr><td><input type="checkbox"/> Extreme Temperature</td><td><input type="checkbox"/> Utility Interruption</td></tr><tr><td><input checked="" type="checkbox"/> Flood</td><td><input type="checkbox"/> Wildfire</td></tr></table>			<input type="checkbox"/> Civil Unrest	<input type="checkbox"/> Hazardous Materials	<input type="checkbox"/> Dam Failure	<input type="checkbox"/> Severe Storm	<input type="checkbox"/> Drought	<input type="checkbox"/> Severe Winter Storm	<input type="checkbox"/> Earthquake	<input type="checkbox"/> Terrorism	<input type="checkbox"/> Epidemic	<input type="checkbox"/> Transportation Accidents	<input type="checkbox"/> Extreme Temperature	<input type="checkbox"/> Utility Interruption	<input checked="" type="checkbox"/> Flood	<input type="checkbox"/> Wildfire
<input type="checkbox"/> Civil Unrest	<input type="checkbox"/> Hazardous Materials																
<input type="checkbox"/> Dam Failure	<input type="checkbox"/> Severe Storm																
<input type="checkbox"/> Drought	<input type="checkbox"/> Severe Winter Storm																
<input type="checkbox"/> Earthquake	<input type="checkbox"/> Terrorism																
<input type="checkbox"/> Epidemic	<input type="checkbox"/> Transportation Accidents																
<input type="checkbox"/> Extreme Temperature	<input type="checkbox"/> Utility Interruption																
<input checked="" type="checkbox"/> Flood	<input type="checkbox"/> Wildfire																
Description of the Problem:	<p>Critical facilities need to be protected to the 500-year flood level. There are four facilities located in the Village identified to be in the flood hazard area:</p> <ul style="list-style-type: none">• Attica Wastewater Treatment Plant• Rochester Regional Health / United Memorial Community Care - Attica Family Medicine• Attica Fire Department• Attica Government Hall																
Description of the Solution:	<p>The Village will notify the critical facility owners and managers of the facility's location in the flood hazard area. The Village will encourage each facility to conduct a feasibility assessment to determine what additional floodproofing measures are needed at the critical facilities to protect them to the 500-year flood level. Options include:</p> <ul style="list-style-type: none">• Elevation of facility• Floodproofing of facility• Mobile flood barriers <p>Once the most cost-effective option is identified, the facility owner or manager will carry out the option.</p>																
Estimated Cost:	TBD based on chosen mitigation measure																
Potential Funding Sources:	FEMA HMA, USDA Community Facilities Grant Program, Emergency Management Performance Grants (EMPG) Program, Village Budget																
Implementation Timeline:	Within 5 Years																
Goals Met:	1, 3, 5																
Benefits:	Ensures continuity of operations of several critical facilities in the Village.																
Impact on Socially Vulnerable Populations:	Protection of critical facilities provides an opportunity for first responders and emergency managers to maintain critical services that socially vulnerable populations rely on.																
Impact on Future Development:	The risk of significant damage occurring to the structure will be reduced, which will allow critical operations to be maintained or only briefly interrupted in severe events. This provides continued support to both current and future development in the service area.																
Impact on Critical Facilities/Lifelines:	This action will protect critical facilities, maintaining the critical services that it provides.																
Impact on Capabilities:	This action improves continuity of operations during a flood event, allows for a more rapid return to pre-disaster capabilities after a flood event, and faster deployment of post disaster capabilities.																
Climate Change Considerations:	This action addresses anticipated increases in flooding frequency and severity through protection to the 500-year (0.2-percent annual chance) flood level.																
Mitigation Category	<table><tr><td><input type="checkbox"/> Local Plans and Regulations (LPR)</td><td><input type="checkbox"/> Natural Systems Protection (NSP)</td></tr><tr><td><input checked="" type="checkbox"/> Structure and Infrastructure Project (SIP)</td><td><input type="checkbox"/> Education and Awareness Programs (EAP)</td></tr></table>			<input type="checkbox"/> Local Plans and Regulations (LPR)	<input type="checkbox"/> Natural Systems Protection (NSP)	<input checked="" type="checkbox"/> Structure and Infrastructure Project (SIP)	<input type="checkbox"/> Education and Awareness Programs (EAP)										
<input type="checkbox"/> Local Plans and Regulations (LPR)	<input type="checkbox"/> Natural Systems Protection (NSP)																
<input checked="" type="checkbox"/> Structure and Infrastructure Project (SIP)	<input type="checkbox"/> Education and Awareness Programs (EAP)																
CRS Category	<table><tr><td><input type="checkbox"/> Preventative Measures (PR)</td><td><input type="checkbox"/> Natural Resource Protection (NR)</td></tr><tr><td><input type="checkbox"/> Property Protection (PP)</td><td><input checked="" type="checkbox"/> Structural Flood Control Projects (SP)</td></tr><tr><td><input type="checkbox"/> Public Information (PI)</td><td><input type="checkbox"/> Emergency Services (ES)</td></tr></table>			<input type="checkbox"/> Preventative Measures (PR)	<input type="checkbox"/> Natural Resource Protection (NR)	<input type="checkbox"/> Property Protection (PP)	<input checked="" type="checkbox"/> Structural Flood Control Projects (SP)	<input type="checkbox"/> Public Information (PI)	<input type="checkbox"/> Emergency Services (ES)								
<input type="checkbox"/> Preventative Measures (PR)	<input type="checkbox"/> Natural Resource Protection (NR)																
<input type="checkbox"/> Property Protection (PP)	<input checked="" type="checkbox"/> Structural Flood Control Projects (SP)																
<input type="checkbox"/> Public Information (PI)	<input type="checkbox"/> Emergency Services (ES)																
Priority	<table><tr><td><input checked="" type="checkbox"/> High</td><td><input type="checkbox"/> Medium</td><td><input type="checkbox"/> Low</td></tr></table>			<input checked="" type="checkbox"/> High	<input type="checkbox"/> Medium	<input type="checkbox"/> Low											
<input checked="" type="checkbox"/> High	<input type="checkbox"/> Medium	<input type="checkbox"/> Low															
Alternatives:	<table><tr><th>Action</th><th>Evaluation</th></tr><tr><td>No Action</td><td>Current problem exists</td></tr></table>			Action	Evaluation	No Action	Current problem exists										
Action	Evaluation																
No Action	Current problem exists																



	Relocate facility	Relocation is expensive and results in loss or delay of critical services in the immediate area
	Establish plans to enter into MOU with neighboring critical facilities to provide service during flood events	Reduction in response times and delay of critical services in the immediate area.

DRAFT



Action 2025-AtticaV-02. Tonawanda Creek Erosion

Lead Agency:	Planning and Zoning Board, Village Public Works																
Supporting Agencies:	DEC, Genesee County Engineering, Genesee County Public Works																
Hazard(s) of Concern:	<table><tr><td><input type="checkbox"/> Civil Unrest</td><td><input type="checkbox"/> Hazardous Materials</td></tr><tr><td><input type="checkbox"/> Dam Failure</td><td><input checked="" type="checkbox"/> Severe Storm</td></tr><tr><td><input type="checkbox"/> Drought</td><td><input checked="" type="checkbox"/> Severe Winter Storm</td></tr><tr><td><input type="checkbox"/> Earthquake</td><td><input type="checkbox"/> Terrorism</td></tr><tr><td><input type="checkbox"/> Epidemic</td><td><input type="checkbox"/> Transportation Accidents</td></tr><tr><td><input type="checkbox"/> Extreme Temperature</td><td><input checked="" type="checkbox"/> Utility Interruption</td></tr><tr><td><input checked="" type="checkbox"/> Flood</td><td><input type="checkbox"/> Wildfire</td></tr></table>			<input type="checkbox"/> Civil Unrest	<input type="checkbox"/> Hazardous Materials	<input type="checkbox"/> Dam Failure	<input checked="" type="checkbox"/> Severe Storm	<input type="checkbox"/> Drought	<input checked="" type="checkbox"/> Severe Winter Storm	<input type="checkbox"/> Earthquake	<input type="checkbox"/> Terrorism	<input type="checkbox"/> Epidemic	<input type="checkbox"/> Transportation Accidents	<input type="checkbox"/> Extreme Temperature	<input checked="" type="checkbox"/> Utility Interruption	<input checked="" type="checkbox"/> Flood	<input type="checkbox"/> Wildfire
<input type="checkbox"/> Civil Unrest	<input type="checkbox"/> Hazardous Materials																
<input type="checkbox"/> Dam Failure	<input checked="" type="checkbox"/> Severe Storm																
<input type="checkbox"/> Drought	<input checked="" type="checkbox"/> Severe Winter Storm																
<input type="checkbox"/> Earthquake	<input type="checkbox"/> Terrorism																
<input type="checkbox"/> Epidemic	<input type="checkbox"/> Transportation Accidents																
<input type="checkbox"/> Extreme Temperature	<input checked="" type="checkbox"/> Utility Interruption																
<input checked="" type="checkbox"/> Flood	<input type="checkbox"/> Wildfire																
Description of the Problem:	The area surrounding Tonawanda Creek is prone to flooding, impacting nearby roads and properties, in particular Prospect Street. Tonawanda Creek has bank erosion issues, threatening encroachment onto nearby roads. Creek banks become eroded due to heavy rains from severe storms, degradation from flood waters and compacted snow and ice from severe winter storms. Stabilization measures, such as including gabions, riprap, drainpipes and/or related improvements, should be considered to prevent flooding. Additional flood mitigation measures may also be considered.																
Description of the Solution:	The Village will assess the feasibility and cost-effectiveness of various stabilization measures, such as including gabions, riprap, drainpipes and/or related improvements to prevent future flooding surrounding Tonawanda Creek and to protect nearby roadways and properties.																
Estimated Cost:	High																
Potential Funding Sources:	FEMA HMA, Village Budget, NYS DEC																
Implementation Timeline:	Within 5 years																
Goals Met:	2																
Benefits:	Overall flooding will be reduced, which will result in less frequency of road closures and reduced damage to properties.																
Impact on Socially Vulnerable Populations:	Areas that were previously vulnerable to frequency or severe flooding events will be less likely to be impacted by flooding events.																
Impact on Future Development:	Future development surrounding Tonawanda Creek will have its risk of flood impacts reduced.																
Impact on Critical Facilities/Lifelines:	Critical facilities and community lifelines near Tonawanda Creek would have a reduced risk to the flood hazard.																
Impact on Capabilities:	Not applicable																
Climate Change Considerations:	Climate change is likely to result in more frequent and severe rainfall events. These events can lead to an influx of water, resulting in flooding conditions.																
Mitigation Category	<table><tr><td><input type="checkbox"/> Local Plans and Regulations (LPR)</td><td><input checked="" type="checkbox"/> Natural Systems Protection (NSP)</td></tr><tr><td><input type="checkbox"/> Structure and Infrastructure Project (SIP)</td><td><input type="checkbox"/> Education and Awareness Programs (EAP)</td></tr></table>			<input type="checkbox"/> Local Plans and Regulations (LPR)	<input checked="" type="checkbox"/> Natural Systems Protection (NSP)	<input type="checkbox"/> Structure and Infrastructure Project (SIP)	<input type="checkbox"/> Education and Awareness Programs (EAP)										
<input type="checkbox"/> Local Plans and Regulations (LPR)	<input checked="" type="checkbox"/> Natural Systems Protection (NSP)																
<input type="checkbox"/> Structure and Infrastructure Project (SIP)	<input type="checkbox"/> Education and Awareness Programs (EAP)																
CRS Category	<table><tr><td><input type="checkbox"/> Preventative Measures (PR)</td><td><input checked="" type="checkbox"/> Natural Resource Protection (NR)</td></tr><tr><td><input type="checkbox"/> Property Protection (PP)</td><td><input type="checkbox"/> Structural Flood Control Projects (SP)</td></tr><tr><td><input type="checkbox"/> Public Information (PI)</td><td><input type="checkbox"/> Emergency Services (ES)</td></tr></table>			<input type="checkbox"/> Preventative Measures (PR)	<input checked="" type="checkbox"/> Natural Resource Protection (NR)	<input type="checkbox"/> Property Protection (PP)	<input type="checkbox"/> Structural Flood Control Projects (SP)	<input type="checkbox"/> Public Information (PI)	<input type="checkbox"/> Emergency Services (ES)								
<input type="checkbox"/> Preventative Measures (PR)	<input checked="" type="checkbox"/> Natural Resource Protection (NR)																
<input type="checkbox"/> Property Protection (PP)	<input type="checkbox"/> Structural Flood Control Projects (SP)																
<input type="checkbox"/> Public Information (PI)	<input type="checkbox"/> Emergency Services (ES)																
Priority	<input checked="" type="checkbox"/> High	<input type="checkbox"/> Medium	<input type="checkbox"/> Low														
Alternatives:	<table><tr><th>Action</th><th>Evaluation</th></tr><tr><td>No Action</td><td>Current problem exists</td></tr><tr><td>Elevate nearby roads</td><td>Cost prohibitive</td></tr><tr><td>Acquire all properties which flood</td><td>Cost prohibitive</td></tr></table>	Action	Evaluation	No Action	Current problem exists	Elevate nearby roads	Cost prohibitive	Acquire all properties which flood	Cost prohibitive								
Action	Evaluation																
No Action	Current problem exists																
Elevate nearby roads	Cost prohibitive																
Acquire all properties which flood	Cost prohibitive																



Action 2025-AtticaV-03. Substantial Damage Management Plan

Lead Agency:	Village Administration																
Supporting Agencies:	Zoning and Planning Board																
Hazard(s) of Concern:	<table><tr><td><input type="checkbox"/> Civil Unrest</td><td><input type="checkbox"/> Hazardous Materials</td></tr><tr><td><input type="checkbox"/> Dam Failure</td><td><input checked="" type="checkbox"/> Severe Storm</td></tr><tr><td><input type="checkbox"/> Drought</td><td><input checked="" type="checkbox"/> Severe Winter Storm</td></tr><tr><td><input type="checkbox"/> Earthquake</td><td><input type="checkbox"/> Terrorism</td></tr><tr><td><input type="checkbox"/> Epidemic</td><td><input type="checkbox"/> Transportation Accidents</td></tr><tr><td><input type="checkbox"/> Extreme Temperature</td><td><input type="checkbox"/> Utility Interruption</td></tr><tr><td><input checked="" type="checkbox"/> Flood</td><td><input checked="" type="checkbox"/> Wildfire</td></tr></table>			<input type="checkbox"/> Civil Unrest	<input type="checkbox"/> Hazardous Materials	<input type="checkbox"/> Dam Failure	<input checked="" type="checkbox"/> Severe Storm	<input type="checkbox"/> Drought	<input checked="" type="checkbox"/> Severe Winter Storm	<input type="checkbox"/> Earthquake	<input type="checkbox"/> Terrorism	<input type="checkbox"/> Epidemic	<input type="checkbox"/> Transportation Accidents	<input type="checkbox"/> Extreme Temperature	<input type="checkbox"/> Utility Interruption	<input checked="" type="checkbox"/> Flood	<input checked="" type="checkbox"/> Wildfire
<input type="checkbox"/> Civil Unrest	<input type="checkbox"/> Hazardous Materials																
<input type="checkbox"/> Dam Failure	<input checked="" type="checkbox"/> Severe Storm																
<input type="checkbox"/> Drought	<input checked="" type="checkbox"/> Severe Winter Storm																
<input type="checkbox"/> Earthquake	<input type="checkbox"/> Terrorism																
<input type="checkbox"/> Epidemic	<input type="checkbox"/> Transportation Accidents																
<input type="checkbox"/> Extreme Temperature	<input type="checkbox"/> Utility Interruption																
<input checked="" type="checkbox"/> Flood	<input checked="" type="checkbox"/> Wildfire																
Description of the Problem:	<p>Officials in NFIP-participating communities are responsible for regulating all development in SFHAs by issuing permits and enforcing local floodplain requirements, including Substantial Damage, for the repairs of damaged buildings. After any disaster event, they must:</p> <ul style="list-style-type: none">• Determine where the damage occurred within the community and if the damaged structures are in an SFHA.• Determine what to use for "market value" and cost to repair; uniformly applying regulations will protect against liability and promote equitable administration.• Determine if repairing plus improving the damaged structure equals or exceeds 50% of the structure's pre-damage value.• Require permits for floodplain development. <p>The Village does not have a Substantial Damage Management Plan in place, nor do they have a formal process in place when conducting substantial damage determinations. The Village is in need of a formal process and plan to provide a framework for conducting such inspections and determinations.</p>																
Description of the Solution:	<p>The Village will develop a Substantial Damage Management Plan, following the six-step planning process in 2021 Developing a Substantial Damage Management Plan (https://crsresources.org/files/500/developing_subst_damage_mgmt_plan.pdf). This plan will outline responsibilities for Substantial Damage determinations, determining market value, and permit approval processes following a disaster event.</p>																
Estimated Cost:	Low																
Potential Funding Sources:	Village Budget																
Implementation Timeline:	Within 3 years																
Goals Met:	1																
Benefits:	This action will provide a guidance document to determine substantial damage in the Village.																
Impact on Socially Vulnerable Populations:	Socially vulnerable populations may disproportionately be impacted by substantial damages and the Village will have guidance on how to handle these damages.																
Impact on Future Development:	Not applicable																
Impact on Critical Facilities/Lifelines:	Critical facilities and lifelines may experience substantial damage and not be able to perform continuity of operations. This plan ensures that there is a procedure outlined to handle these issues.																
Impact on Capabilities:	This action will produce substantial damage guidance for Village officials to use.																
Climate Change Considerations:	Climate change is leading to an increase in frequency and intensity of precipitation events, which also increases flooding and may lead to a main failure resulting from substantial damages.																
Mitigation Category	<table><tr><td><input checked="" type="checkbox"/> Local Plans and Regulations (LPR)</td><td><input type="checkbox"/> Natural Systems Protection (NSP)</td></tr><tr><td><input type="checkbox"/> Structure and Infrastructure Project (SIP)</td><td><input type="checkbox"/> Education and Awareness Programs (EAP)</td></tr></table>			<input checked="" type="checkbox"/> Local Plans and Regulations (LPR)	<input type="checkbox"/> Natural Systems Protection (NSP)	<input type="checkbox"/> Structure and Infrastructure Project (SIP)	<input type="checkbox"/> Education and Awareness Programs (EAP)										
<input checked="" type="checkbox"/> Local Plans and Regulations (LPR)	<input type="checkbox"/> Natural Systems Protection (NSP)																
<input type="checkbox"/> Structure and Infrastructure Project (SIP)	<input type="checkbox"/> Education and Awareness Programs (EAP)																
CRS Category	<table><tr><td><input checked="" type="checkbox"/> Preventative Measures (PR)</td><td><input type="checkbox"/> Natural Resource Protection (NR)</td></tr><tr><td><input type="checkbox"/> Property Protection (PP)</td><td><input type="checkbox"/> Structural Flood Control Projects (SP)</td></tr><tr><td><input type="checkbox"/> Public Information (PI)</td><td><input type="checkbox"/> Emergency Services (ES)</td></tr></table>			<input checked="" type="checkbox"/> Preventative Measures (PR)	<input type="checkbox"/> Natural Resource Protection (NR)	<input type="checkbox"/> Property Protection (PP)	<input type="checkbox"/> Structural Flood Control Projects (SP)	<input type="checkbox"/> Public Information (PI)	<input type="checkbox"/> Emergency Services (ES)								
<input checked="" type="checkbox"/> Preventative Measures (PR)	<input type="checkbox"/> Natural Resource Protection (NR)																
<input type="checkbox"/> Property Protection (PP)	<input type="checkbox"/> Structural Flood Control Projects (SP)																
<input type="checkbox"/> Public Information (PI)	<input type="checkbox"/> Emergency Services (ES)																
Priority	<table><tr><td><input checked="" type="checkbox"/> High</td><td><input type="checkbox"/> Medium</td><td><input type="checkbox"/> Low</td></tr></table>			<input checked="" type="checkbox"/> High	<input type="checkbox"/> Medium	<input type="checkbox"/> Low											
<input checked="" type="checkbox"/> High	<input type="checkbox"/> Medium	<input type="checkbox"/> Low															
Alternatives:	<table><tr><th>Action</th><th>Evaluation</th></tr><tr><td>No Action</td><td>Current problem exists</td></tr></table>			Action	Evaluation	No Action	Current problem exists										
Action	Evaluation																
No Action	Current problem exists																



	Rely on state or federal resources following disaster events	Resources may not be available during major widespread events
	Establish MOUs with outside agencies to conduct Substantial Damage Determinations	A plan outlining responsibility is still necessary to prevent missing important requirements

DRAFT



Action 2025-AtticaV-04. Epidemic Education and Outreach

Lead Agency:	Village Administration																
Supporting Agencies:	Zoning and Planning Board																
Hazard(s) of Concern:	<table><tr><td><input type="checkbox"/> Civil Unrest</td><td><input type="checkbox"/> Hazardous Materials</td></tr><tr><td><input type="checkbox"/> Dam Failure</td><td><input type="checkbox"/> Severe Storm</td></tr><tr><td><input type="checkbox"/> Drought</td><td><input type="checkbox"/> Severe Winter Storm</td></tr><tr><td><input type="checkbox"/> Earthquake</td><td><input type="checkbox"/> Terrorism</td></tr><tr><td><input checked="" type="checkbox"/> Epidemic</td><td><input type="checkbox"/> Transportation Accidents</td></tr><tr><td><input type="checkbox"/> Extreme Temperature</td><td><input type="checkbox"/> Utility Interruption</td></tr><tr><td><input type="checkbox"/> Flood</td><td><input type="checkbox"/> Wildfire</td></tr></table>			<input type="checkbox"/> Civil Unrest	<input type="checkbox"/> Hazardous Materials	<input type="checkbox"/> Dam Failure	<input type="checkbox"/> Severe Storm	<input type="checkbox"/> Drought	<input type="checkbox"/> Severe Winter Storm	<input type="checkbox"/> Earthquake	<input type="checkbox"/> Terrorism	<input checked="" type="checkbox"/> Epidemic	<input type="checkbox"/> Transportation Accidents	<input type="checkbox"/> Extreme Temperature	<input type="checkbox"/> Utility Interruption	<input type="checkbox"/> Flood	<input type="checkbox"/> Wildfire
<input type="checkbox"/> Civil Unrest	<input type="checkbox"/> Hazardous Materials																
<input type="checkbox"/> Dam Failure	<input type="checkbox"/> Severe Storm																
<input type="checkbox"/> Drought	<input type="checkbox"/> Severe Winter Storm																
<input type="checkbox"/> Earthquake	<input type="checkbox"/> Terrorism																
<input checked="" type="checkbox"/> Epidemic	<input type="checkbox"/> Transportation Accidents																
<input type="checkbox"/> Extreme Temperature	<input type="checkbox"/> Utility Interruption																
<input type="checkbox"/> Flood	<input type="checkbox"/> Wildfire																
Description of the Problem:	The Village faces risk from epidemic but does not have a comprehensive education and outreach program to educate residents and businesses about hazard mitigation, preparation, response, and recovery utilizing a variety of outreach methods. The Village does not currently have hazard mitigation information and outreach on the Village website.																
Description of the Solution:	Create outreach materials, or utilize those from Genesee County, on epidemic risks and methods of mitigation measures. Methods of distribution may include Village events, newsletters, social media, the Village website, and having the materials on display for the public at Village libraries and offices. Outreach materials will be specified with education and information for the epidemic hazard.																
Estimated Cost:	Low																
Potential Funding Sources:	Village Budget																
Implementation Timeline:	1 year																
Goals Met:	3																
Benefits:	This action will improve the public education and outreach capabilities in the Village by including discussions on disaster preparedness and hazard mitigation to residents and business owners, which will contribute to the resiliency of the Village.																
Impact on Socially Vulnerable Populations:	Socially vulnerable populations will learn how to prepare for and mitigate the epidemic hazard which may impact them in the Village.																
Impact on Future Development:	Not applicable																
Impact on Critical Facilities/Lifelines:	Businesses, which may be considered critical facilities or lifelines, would be more informed on how to prepare for emergency events and mitigate the risks of the epidemic hazard. With these businesses becoming more resilient, this action would contribute to their continuity of operations.																
Impact on Capabilities:	This action would build upon the County's public education and outreach capabilities and adapt it to the Village's needs.																
Climate Change Considerations:	Climate change is likely to increase the intensity and frequency of many climate related disaster events. This action will inform residents and business owners of how to reduce risk from the epidemic hazard and how climate change may exacerbate those risks.																
Mitigation Category	<table><tr><td><input type="checkbox"/> Local Plans and Regulations (LPR)</td><td><input type="checkbox"/> Natural Systems Protection (NSP)</td></tr><tr><td><input type="checkbox"/> Structure and Infrastructure Project (SIP)</td><td><input checked="" type="checkbox"/> Education and Awareness Programs (EAP)</td></tr></table>			<input type="checkbox"/> Local Plans and Regulations (LPR)	<input type="checkbox"/> Natural Systems Protection (NSP)	<input type="checkbox"/> Structure and Infrastructure Project (SIP)	<input checked="" type="checkbox"/> Education and Awareness Programs (EAP)										
<input type="checkbox"/> Local Plans and Regulations (LPR)	<input type="checkbox"/> Natural Systems Protection (NSP)																
<input type="checkbox"/> Structure and Infrastructure Project (SIP)	<input checked="" type="checkbox"/> Education and Awareness Programs (EAP)																
CRS Category	<table><tr><td><input type="checkbox"/> Preventative Measures (PR)</td><td><input type="checkbox"/> Natural Resource Protection (NR)</td></tr><tr><td><input type="checkbox"/> Property Protection (PP)</td><td><input type="checkbox"/> Structural Flood Control Projects (SP)</td></tr><tr><td><input checked="" type="checkbox"/> Public Information (PI)</td><td><input type="checkbox"/> Emergency Services (ES)</td></tr></table>			<input type="checkbox"/> Preventative Measures (PR)	<input type="checkbox"/> Natural Resource Protection (NR)	<input type="checkbox"/> Property Protection (PP)	<input type="checkbox"/> Structural Flood Control Projects (SP)	<input checked="" type="checkbox"/> Public Information (PI)	<input type="checkbox"/> Emergency Services (ES)								
<input type="checkbox"/> Preventative Measures (PR)	<input type="checkbox"/> Natural Resource Protection (NR)																
<input type="checkbox"/> Property Protection (PP)	<input type="checkbox"/> Structural Flood Control Projects (SP)																
<input checked="" type="checkbox"/> Public Information (PI)	<input type="checkbox"/> Emergency Services (ES)																
Priority	<table><tr><td><input checked="" type="checkbox"/> High</td><td><input type="checkbox"/> Medium</td><td><input type="checkbox"/> Low</td></tr></table>			<input checked="" type="checkbox"/> High	<input type="checkbox"/> Medium	<input type="checkbox"/> Low											
<input checked="" type="checkbox"/> High	<input type="checkbox"/> Medium	<input type="checkbox"/> Low															
Alternatives:	<table><tr><th>Action</th><th>Evaluation</th></tr><tr><td>No Action</td><td>Current problem exists</td></tr><tr><td>Rely on state or federal resources</td><td>Resources may be generalized and not specific to the risks in the Village</td></tr><tr><td>Use only a few methods for distribution</td><td>Using only a few methods of distribution may hinder socially vulnerable populations from receiving the guidance</td></tr></table>			Action	Evaluation	No Action	Current problem exists	Rely on state or federal resources	Resources may be generalized and not specific to the risks in the Village	Use only a few methods for distribution	Using only a few methods of distribution may hinder socially vulnerable populations from receiving the guidance						
Action	Evaluation																
No Action	Current problem exists																
Rely on state or federal resources	Resources may be generalized and not specific to the risks in the Village																
Use only a few methods for distribution	Using only a few methods of distribution may hinder socially vulnerable populations from receiving the guidance																



Action 2025-AtticaV-05. Water Conservation Ordinance

Lead Agency:	Village Administration		
Supporting Agencies:	Planning Board, Zoning Board, NYS DEC		
Hazard(s) of Concern:	<div><input type="checkbox"/> Civil Unrest</div> <div><input type="checkbox"/> Dam Failure</div> <div><input checked="" type="checkbox"/> Drought</div> <div><input type="checkbox"/> Earthquake</div> <div><input type="checkbox"/> Epidemic</div> <div><input checked="" type="checkbox"/> Extreme Temperature</div> <div><input type="checkbox"/> Flood</div> <div><input type="checkbox"/> Hazardous Materials</div> <div><input type="checkbox"/> Severe Storm</div> <div><input type="checkbox"/> Severe Winter Storm</div> <div><input type="checkbox"/> Terrorism</div> <div><input type="checkbox"/> Transportation Accidents</div> <div><input type="checkbox"/> Utility Interruption</div> <div><input type="checkbox"/> Wildfire</div>		
Description of the Problem:	The Village may be impacted by drought, as potable water wells could become depleted by unnecessary use. Drought puts a strain on agriculture, recreational use, and daily use of water. The Village does not have a water conservation ordinance to encourage and support water conservation efforts. Extreme temperatures may enhance the impacts of drought by causing the rapid evaporation of moisture from potable wells and floral and fauna.		
Description of the Solution:	The Village will develop a water conservation ordinance to outline water conservation efforts which should be taken during periods of low rainfall, extreme heat, and drought. The Village will look to NYS DEC for assistance in the development of the ordinance.		
Estimated Cost:	Low		
Potential Funding Sources:	Village Budget		
Implementation Timeline:	Within 3 years		
Goals Met:	1, 2		
Benefits:	This action will support the safe, continued use of potable water to ensure there is adequate drinking water available to support residents. Furthermore, the ordinance will assist in ensuring agriculture practices have water available to support the grower's livelihood.		
Impact on Socially Vulnerable Populations:	Populations will have access to potable water sources during periods of drought and extreme heat.		
Impact on Future Development:	Not applicable		
Impact on Critical Facilities/Lifelines:	A water conservation ordinance will mitigate potential impacts to the water sources for the Village. This action will inform residents of the importance of the ordinance and how over-utilizing water sources may impact the quality of life in the Village.		
Impact on Capabilities:	This action will ensure potable water is available within the jurisdiction during time of drought by developing a water conservation ordinance.		
Climate Change Considerations:	Higher temperatures are expected to increase the amount of moisture that evaporates from land and water. These changes have the potential to lead to more frequent and severe droughts, which, in turn, increases the likelihood of wildfires.		
Mitigation Category	<input checked="" type="checkbox"/> Local Plans and Regulations (LPR) <input type="checkbox"/> Structure and Infrastructure Project (SIP)		<input type="checkbox"/> Natural Systems Protection (NSP) <input type="checkbox"/> Education and Awareness Programs (EAP)
CRS Category	<input checked="" type="checkbox"/> Preventative Measures (PR) <input type="checkbox"/> Property Protection (PP) <input type="checkbox"/> Public Information (PI)		<input type="checkbox"/> Natural Resource Protection (NR) <input type="checkbox"/> Structural Flood Control Projects (SP) <input type="checkbox"/> Emergency Services (ES)
Priority	<input checked="" type="checkbox"/> High	<input type="checkbox"/> Medium	<input type="checkbox"/> Low
Alternatives:	Action		Evaluation
	No Action		Current problem exists
	Only enforce ordinance and do not encourage water conservation practices year-round		Outside of drought periods, water issues may arise
	Do not publicize ordinance once developed		Residents will be uninformed and partaking in practices outside of the Village's ordinances



Action 2025-AtticaV-06. Comprehensive Emergency Management Plan

Lead Agency:	Village Administration, Genesee County Highway, NYSDOT																
Supporting Agencies:	Planning and Zoning Board, Public Works																
Hazard(s) of Concern:	<table><tr><td><input type="checkbox"/> Civil Unrest</td><td><input checked="" type="checkbox"/> Hazardous Materials</td></tr><tr><td><input type="checkbox"/> Dam Failure</td><td><input checked="" type="checkbox"/> Severe Storm</td></tr><tr><td><input checked="" type="checkbox"/> Drought</td><td><input checked="" type="checkbox"/> Severe Winter Storm</td></tr><tr><td><input type="checkbox"/> Earthquake</td><td><input type="checkbox"/> Terrorism</td></tr><tr><td><input checked="" type="checkbox"/> Epidemic</td><td><input checked="" type="checkbox"/> Transportation Accidents</td></tr><tr><td><input checked="" type="checkbox"/> Extreme Temperature</td><td><input checked="" type="checkbox"/> Utility Interruption</td></tr><tr><td><input checked="" type="checkbox"/> Flood</td><td><input checked="" type="checkbox"/> Wildfire</td></tr></table>			<input type="checkbox"/> Civil Unrest	<input checked="" type="checkbox"/> Hazardous Materials	<input type="checkbox"/> Dam Failure	<input checked="" type="checkbox"/> Severe Storm	<input checked="" type="checkbox"/> Drought	<input checked="" type="checkbox"/> Severe Winter Storm	<input type="checkbox"/> Earthquake	<input type="checkbox"/> Terrorism	<input checked="" type="checkbox"/> Epidemic	<input checked="" type="checkbox"/> Transportation Accidents	<input checked="" type="checkbox"/> Extreme Temperature	<input checked="" type="checkbox"/> Utility Interruption	<input checked="" type="checkbox"/> Flood	<input checked="" type="checkbox"/> Wildfire
<input type="checkbox"/> Civil Unrest	<input checked="" type="checkbox"/> Hazardous Materials																
<input type="checkbox"/> Dam Failure	<input checked="" type="checkbox"/> Severe Storm																
<input checked="" type="checkbox"/> Drought	<input checked="" type="checkbox"/> Severe Winter Storm																
<input type="checkbox"/> Earthquake	<input type="checkbox"/> Terrorism																
<input checked="" type="checkbox"/> Epidemic	<input checked="" type="checkbox"/> Transportation Accidents																
<input checked="" type="checkbox"/> Extreme Temperature	<input checked="" type="checkbox"/> Utility Interruption																
<input checked="" type="checkbox"/> Flood	<input checked="" type="checkbox"/> Wildfire																
Description of the Problem:	The Village has one major road which traverses through the jurisdiction, NYS Route 98. Transportation accidents are apt to occur on this roadway more than local roads. Further, hazardous materials may be transported on the major roadway or the rail which goes through the center of the Village. The Village does not have a Comprehensive Emergency Management Plan (CEMP). Hazard mitigation and transportation accident principles need to be integrated into the CEMP. A CEMP establishes the overall authority, roles, and functions performed during incidents. Incorporating hazard mitigation principles into a CEMP ensures hazard risk is identified.																
Description of the Solution:	The Village will develop a Comprehensive Emergency Management Plan (CEMP), with support from the Genesee County Office of Emergency Management. The CEMP will integrate hazard mitigation and transportation accident principles into its contents, including addresses capabilities related to reduce the risk to the identified hazards of concern identified with this Hazard Mitigation Plan. The Village will send the CEMP to the County for review, followed by a State review.																
Estimated Cost:	Low																
Potential Funding Sources:	Village Budget, EMPG																
Implementation Timeline:	Within 3 years																
Goals Met:	1, 3, 4																
Benefits:	The CEMP details what the Village will do during a disaster (incident command implementation, command center location and activities, specific plans by department, etc.). The creation of a CEMP will permit the Village to integrate new plans, policies, capabilities, and hazard assessments.																
Impact on Socially Vulnerable Populations:	The section overview portion of the CEMP covers a discussion of a variety of topics, including population distribution and locations, including any concentrated populations of individuals with disabilities, others with access and functional needs, or individuals with limited English proficiency.																
Impact on Future Development:	Future development will be protected by the actions which the Village performs following the CEMP.																
Impact on Critical Facilities/Lifelines:	The section overview portion of the CEMP covers a discussion of a variety of topics, including vulnerable critical facilities (e.g. nursing homes, schools, hospitals, infrastructure).																
Impact on Capabilities:	This action will create a planning and response capability for the Village.																
Climate Change Considerations:	Climate change may result in an increase in the frequency and severity of weather-related disaster events. As impacts from climate change are increasingly felt, the contents in an CEMP, including in the basic plan and any annexes, may need to be updated.																
Mitigation Category	<table><tr><td><input checked="" type="checkbox"/> Local Plans and Regulations (LPR)</td><td><input type="checkbox"/> Natural Systems Protection (NSP)</td></tr><tr><td><input type="checkbox"/> Structure and Infrastructure Project (SIP)</td><td><input type="checkbox"/> Education and Awareness Programs (EAP)</td></tr></table>			<input checked="" type="checkbox"/> Local Plans and Regulations (LPR)	<input type="checkbox"/> Natural Systems Protection (NSP)	<input type="checkbox"/> Structure and Infrastructure Project (SIP)	<input type="checkbox"/> Education and Awareness Programs (EAP)										
<input checked="" type="checkbox"/> Local Plans and Regulations (LPR)	<input type="checkbox"/> Natural Systems Protection (NSP)																
<input type="checkbox"/> Structure and Infrastructure Project (SIP)	<input type="checkbox"/> Education and Awareness Programs (EAP)																
CRS Category	<table><tr><td><input type="checkbox"/> Preventative Measures (PR)</td><td><input type="checkbox"/> Natural Resource Protection (NR)</td></tr><tr><td><input type="checkbox"/> Property Protection (PP)</td><td><input type="checkbox"/> Structural Flood Control Projects (SP)</td></tr><tr><td><input type="checkbox"/> Public Information (PI)</td><td><input checked="" type="checkbox"/> Emergency Services (ES)</td></tr></table>			<input type="checkbox"/> Preventative Measures (PR)	<input type="checkbox"/> Natural Resource Protection (NR)	<input type="checkbox"/> Property Protection (PP)	<input type="checkbox"/> Structural Flood Control Projects (SP)	<input type="checkbox"/> Public Information (PI)	<input checked="" type="checkbox"/> Emergency Services (ES)								
<input type="checkbox"/> Preventative Measures (PR)	<input type="checkbox"/> Natural Resource Protection (NR)																
<input type="checkbox"/> Property Protection (PP)	<input type="checkbox"/> Structural Flood Control Projects (SP)																
<input type="checkbox"/> Public Information (PI)	<input checked="" type="checkbox"/> Emergency Services (ES)																
Priority	<table><tr><td><input checked="" type="checkbox"/> High</td><td><input type="checkbox"/> Medium</td><td><input type="checkbox"/> Low</td></tr></table>			<input checked="" type="checkbox"/> High	<input type="checkbox"/> Medium	<input type="checkbox"/> Low											
<input checked="" type="checkbox"/> High	<input type="checkbox"/> Medium	<input type="checkbox"/> Low															
Alternatives:	<table><tr><th>Action</th><th>Evaluation</th></tr><tr><td>No Action</td><td>Current problem exists</td></tr><tr><td>Integrate hazard mitigation principles in only hazard appendices</td><td>The plan will miss integration opportunities in the basic plan and annexes</td></tr></table>			Action	Evaluation	No Action	Current problem exists	Integrate hazard mitigation principles in only hazard appendices	The plan will miss integration opportunities in the basic plan and annexes								
Action	Evaluation																
No Action	Current problem exists																
Integrate hazard mitigation principles in only hazard appendices	The plan will miss integration opportunities in the basic plan and annexes																



Ask County to integrate hazard mitigation into the County CEMP

Village CEMP will remain undeveloped

DRAFT



Action 2025-AtticaV-07. Flood Damage Prevention Ordinance Update

Lead Agency:	Village Administration		
Supporting Agencies:	Zoning and Planning Board		
Hazard(s) of Concern:	<div><input type="checkbox"/> Civil Unrest</div> <div><input type="checkbox"/> Dam Failure</div> <div><input type="checkbox"/> Drought</div> <div><input type="checkbox"/> Earthquake</div> <div><input type="checkbox"/> Epidemic</div> <div><input type="checkbox"/> Extreme Temperature</div> <div><input checked="" type="checkbox"/> Flood</div> <div><input type="checkbox"/> Hazardous Materials</div> <div><input type="checkbox"/> Severe Storm</div> <div><input type="checkbox"/> Severe Winter Storm</div> <div><input type="checkbox"/> Terrorism</div> <div><input type="checkbox"/> Transportation Accidents</div> <div><input type="checkbox"/> Utility Interruption</div> <div><input type="checkbox"/> Wildfire</div>		
Description of the Problem:	The current flood damage prevention ordinance does not include the 2-foot mandated NYS freeboard requirements. While the existing ordinance may be compliant with NFIP requirements, State requirements which exceed NFIP requirements must be adhered to.		
Description of the Solution:	The Village will work with Genesee County and NYSDEC to ensure its Flood Damage Prevention Ordinance is updated to adhere to NYS requirements. After obtaining the appropriate review and concurrence by the NFIP State Coordinator and the FEMA Regional Office, the Village will update and adopt the Flood Damage Prevention Ordinance.		
Estimated Cost:	Low		
Potential Funding Sources:	Village Budget		
Implementation Timeline:	Within 3 years		
Goals Met:	1, 2		
Benefits:	The updated ordinance will improve floodplain management, meet NFIP and State requirements, and increase resilience of new and substantially improved structures in the floodplain.		
Impact on Socially Vulnerable Populations:	The action will result in better regulation of construction standards within the Special Flood Hazard Area where significant risk to socially vulnerable populations exists.		
Impact on Future Development:	The action will result in stronger regulation of construction standards for future development in the Special Flood Hazard Area.		
Impact on Critical Facilities/Lifelines:	Critical facilities and lifelines located in the Special Flood Hazard Area will be required to meet the requirements set forth in the ordinance.		
Impact on Capabilities:	This action will improve floodplain management capabilities through better outlining of responsibilities and administrative procedures.		
Climate Change Considerations:	The updated ordinance includes the State's higher standards that are in place to address heightened flood risk due to climate change such as those for floodway rise and mandatory freeboard.		
Mitigation Category	<input checked="" type="checkbox"/> Local Plans and Regulations (LPR) <input type="checkbox"/> Structure and Infrastructure Project (SIP)		<input type="checkbox"/> Natural Systems Protection (NSP) <input type="checkbox"/> Education and Awareness Programs (EAP)
CRS Category	<input checked="" type="checkbox"/> Preventative Measures (PR) <input type="checkbox"/> Property Protection (PP) <input type="checkbox"/> Public Information (PI)		<input type="checkbox"/> Natural Resource Protection (NR) <input type="checkbox"/> Structural Flood Control Projects (SP) <input type="checkbox"/> Emergency Services (ES)
Priority	<input checked="" type="checkbox"/> High	<input type="checkbox"/> Medium	<input type="checkbox"/> Low
Alternatives:	Action		Evaluation
	No Action		Current problem exists
	Update only freeboard requirements		Other areas of the ordinance which need to be updated would not be
	Leave NFIP		Residents lose flood insurance coverage



Action 2025-AtticaV-08. Shared Service Agreement for Emergency Response

Lead Agency:	Village Administration																
Supporting Agencies:	Zoning and Planning Board																
Hazard(s) of Concern:	<table><tr><td><input type="checkbox"/> Civil Unrest</td><td><input checked="" type="checkbox"/> Hazardous Materials</td></tr><tr><td><input type="checkbox"/> Dam Failure</td><td><input checked="" type="checkbox"/> Severe Storm</td></tr><tr><td><input checked="" type="checkbox"/> Drought</td><td><input checked="" type="checkbox"/> Severe Winter Storm</td></tr><tr><td><input type="checkbox"/> Earthquake</td><td><input type="checkbox"/> Terrorism</td></tr><tr><td><input checked="" type="checkbox"/> Epidemic</td><td><input checked="" type="checkbox"/> Transportation Accidents</td></tr><tr><td><input checked="" type="checkbox"/> Extreme Temperature</td><td><input checked="" type="checkbox"/> Utility Interruption</td></tr><tr><td><input checked="" type="checkbox"/> Flood</td><td><input checked="" type="checkbox"/> Wildfire</td></tr></table>			<input type="checkbox"/> Civil Unrest	<input checked="" type="checkbox"/> Hazardous Materials	<input type="checkbox"/> Dam Failure	<input checked="" type="checkbox"/> Severe Storm	<input checked="" type="checkbox"/> Drought	<input checked="" type="checkbox"/> Severe Winter Storm	<input type="checkbox"/> Earthquake	<input type="checkbox"/> Terrorism	<input checked="" type="checkbox"/> Epidemic	<input checked="" type="checkbox"/> Transportation Accidents	<input checked="" type="checkbox"/> Extreme Temperature	<input checked="" type="checkbox"/> Utility Interruption	<input checked="" type="checkbox"/> Flood	<input checked="" type="checkbox"/> Wildfire
<input type="checkbox"/> Civil Unrest	<input checked="" type="checkbox"/> Hazardous Materials																
<input type="checkbox"/> Dam Failure	<input checked="" type="checkbox"/> Severe Storm																
<input checked="" type="checkbox"/> Drought	<input checked="" type="checkbox"/> Severe Winter Storm																
<input type="checkbox"/> Earthquake	<input type="checkbox"/> Terrorism																
<input checked="" type="checkbox"/> Epidemic	<input checked="" type="checkbox"/> Transportation Accidents																
<input checked="" type="checkbox"/> Extreme Temperature	<input checked="" type="checkbox"/> Utility Interruption																
<input checked="" type="checkbox"/> Flood	<input checked="" type="checkbox"/> Wildfire																
Description of the Problem:	The Village and the Town of Attica do not have procedures developed and documented to detail emergency response in hazard events, including natural, technological, and human caused.																
Description of the Solution:	The Village will work with the Town to set up joint emergency response procedures so that the shared service agreement between the Town and Village can mitigate the long-term risk from natural, technological, and human caused hazards.																
Estimated Cost:	Low																
Potential Funding Sources:	Village and Town Budget																
Implementation Timeline:	Within 3 years																
Goals Met:	1, 2, 4																
Benefits:	This action ensures that the Town and Village of Attica will work together in terms of emergency response to reduce vulnerability.																
Impact on Socially Vulnerable Populations:	The action will result in better response for both the Town and the Village and will ensure the protection of both populations with a focus on socially vulnerable populations.																
Impact on Future Development:	The action will result in a stronger preparation and capacity for both municipalities to respond to human caused, natural and technological hazards which may encourage development in both jurisdictions.																
Impact on Critical Facilities/Lifelines:	Critical facilities and lifelines will be better protected by the shared service agreement.																
Impact on Capabilities:	This action will reduce vulnerability to hazard events and will strengthen the Village's emergency response capabilities.																
Climate Change Considerations:	Climate change may result in an increase in the frequency and severity of weather-related disaster events.																
Mitigation Category	<table><tr><td><input checked="" type="checkbox"/> Local Plans and Regulations (LPR)</td><td><input type="checkbox"/> Natural Systems Protection (NSP)</td></tr><tr><td><input type="checkbox"/> Structure and Infrastructure Project (SIP)</td><td><input type="checkbox"/> Education and Awareness Programs (EAP)</td></tr></table>			<input checked="" type="checkbox"/> Local Plans and Regulations (LPR)	<input type="checkbox"/> Natural Systems Protection (NSP)	<input type="checkbox"/> Structure and Infrastructure Project (SIP)	<input type="checkbox"/> Education and Awareness Programs (EAP)										
<input checked="" type="checkbox"/> Local Plans and Regulations (LPR)	<input type="checkbox"/> Natural Systems Protection (NSP)																
<input type="checkbox"/> Structure and Infrastructure Project (SIP)	<input type="checkbox"/> Education and Awareness Programs (EAP)																
CRS Category	<table><tr><td><input type="checkbox"/> Preventative Measures (PR)</td><td><input type="checkbox"/> Natural Resource Protection (NR)</td></tr><tr><td><input type="checkbox"/> Property Protection (PP)</td><td><input type="checkbox"/> Structural Flood Control Projects (SP)</td></tr><tr><td><input type="checkbox"/> Public Information (PI)</td><td><input checked="" type="checkbox"/> Emergency Services (ES)</td></tr></table>			<input type="checkbox"/> Preventative Measures (PR)	<input type="checkbox"/> Natural Resource Protection (NR)	<input type="checkbox"/> Property Protection (PP)	<input type="checkbox"/> Structural Flood Control Projects (SP)	<input type="checkbox"/> Public Information (PI)	<input checked="" type="checkbox"/> Emergency Services (ES)								
<input type="checkbox"/> Preventative Measures (PR)	<input type="checkbox"/> Natural Resource Protection (NR)																
<input type="checkbox"/> Property Protection (PP)	<input type="checkbox"/> Structural Flood Control Projects (SP)																
<input type="checkbox"/> Public Information (PI)	<input checked="" type="checkbox"/> Emergency Services (ES)																
Priority	<table><tr><td><input checked="" type="checkbox"/> High</td><td><input type="checkbox"/> Medium</td><td><input type="checkbox"/> Low</td></tr></table>			<input checked="" type="checkbox"/> High	<input type="checkbox"/> Medium	<input type="checkbox"/> Low											
<input checked="" type="checkbox"/> High	<input type="checkbox"/> Medium	<input type="checkbox"/> Low															
Alternatives:	<table><tr><th>Action</th><th>Evaluation</th></tr><tr><td>No Action</td><td>Current problem exists</td></tr><tr><td>Depend on County</td><td>Village is already partnered with County</td></tr><tr><td>Rely on State or Federal Resources</td><td>State and Federal resources may be stretched thin during large events</td></tr></table>			Action	Evaluation	No Action	Current problem exists	Depend on County	Village is already partnered with County	Rely on State or Federal Resources	State and Federal resources may be stretched thin during large events						
Action	Evaluation																
No Action	Current problem exists																
Depend on County	Village is already partnered with County																
Rely on State or Federal Resources	State and Federal resources may be stretched thin during large events																



Action 2025-AtticaV-09. Wildfire Education and Outreach

Lead Agency:	Village Administration										
Supporting Agencies:	Genesee County										
Hazard(s) of Concern:	<div><input type="checkbox"/> Civil Unrest</div> <div><input type="checkbox"/> Dam Failure</div> <div><input type="checkbox"/> Drought</div> <div><input type="checkbox"/> Earthquake</div> <div><input type="checkbox"/> Epidemic</div> <div><input type="checkbox"/> Extreme Temperature</div> <div><input type="checkbox"/> Flood</div> <div><input type="checkbox"/> Hazardous Materials</div> <div><input type="checkbox"/> Severe Storm</div> <div><input type="checkbox"/> Severe Winter Storm</div> <div><input type="checkbox"/> Terrorism</div> <div><input type="checkbox"/> Transportation Accidents</div> <div><input type="checkbox"/> Utility Interruption</div> <div><input checked="" type="checkbox"/> Wildfire</div>										
Description of the Problem:	The Village faces risk from wildfires but does not have a comprehensive education and outreach program to educate residents and businesses about hazard mitigation, preparation, response, and recovery utilizing a variety of outreach methods. The Village does not currently have hazard mitigation information and outreach on the Village website.										
Description of the Solution:	Create outreach materials, or utilize those from the County, on wildfire risks and methods of mitigation measures. Methods of distribution may include Village events, newsletters, social media, the Village website, and having the materials on display for the public at Village libraries and/or offices. Outreach materials will be specified with education and information for the wildfire hazard.										
Estimated Cost:	Low										
Potential Funding Sources:	Village Budget										
Implementation Timeline:	1 year										
Goals Met:	3										
Benefits:	This action will improve the public education and outreach capabilities in the Village by including discussions on disaster preparedness and hazard mitigation to residents and business owners, which will contribute to the resiliency of the Village.										
Impact on Socially Vulnerable Populations:	Socially vulnerable populations will learn how to prepare for and mitigate the wildfire hazard which may impact them in the Village.										
Impact on Future Development:	Not applicable										
Impact on Critical Facilities/Lifelines:	Businesses, which may be considered critical facilities or lifelines, would be more informed on how to prepare for emergency events and mitigate the risks of the wildfire hazard. With these businesses becoming more resilient, this action would contribute to their continuity of operations.										
Impact on Capabilities:	This action would build upon the County's public education and outreach capabilities and adapt it to the Village's needs.										
Climate Change Considerations:	Climate change is likely to increase the intensity and frequency of many climate related disaster events. This action will inform residents and business owners of how to reduce risk from the wildfire hazard and how climate change may exacerbate those risks.										
Mitigation Category	<div><input type="checkbox"/> Local Plans and Regulations (LPR)</div> <div><input type="checkbox"/> Structure and Infrastructure Project (SIP)</div> <div><input type="checkbox"/> Natural Systems Protection (NSP)</div> <div><input checked="" type="checkbox"/> Education and Awareness Programs (EAP)</div>										
CRS Category	<div><input type="checkbox"/> Preventative Measures (PR)</div> <div><input type="checkbox"/> Property Protection (PP)</div> <div><input checked="" type="checkbox"/> Public Information (PI)</div> <div><input type="checkbox"/> Natural Resource Protection (NR)</div> <div><input type="checkbox"/> Structural Flood Control Projects (SP)</div> <div><input type="checkbox"/> Emergency Services (ES)</div>										
Priority	<input checked="" type="checkbox"/> High	<input type="checkbox"/> Medium	<input type="checkbox"/> Low								
Alternatives:	<table><thead><tr><th>Action</th><th>Evaluation</th></tr></thead><tbody><tr><td>No Action</td><td>Current problem exists</td></tr><tr><td>Rely on state or federal resources</td><td>Resources may be generalized and not specific to the risks in the Village</td></tr><tr><td>Use only a few methods for distribution</td><td>Using only a few methods of distribution may hinder socially vulnerable populations from receiving the guidance</td></tr></tbody></table>	Action	Evaluation	No Action	Current problem exists	Rely on state or federal resources	Resources may be generalized and not specific to the risks in the Village	Use only a few methods for distribution	Using only a few methods of distribution may hinder socially vulnerable populations from receiving the guidance		
Action	Evaluation										
No Action	Current problem exists										
Rely on state or federal resources	Resources may be generalized and not specific to the risks in the Village										
Use only a few methods for distribution	Using only a few methods of distribution may hinder socially vulnerable populations from receiving the guidance										



Action 2025-AtticaV-10. Repetitive Loss Properties

Lead Agency:	Village Administration										
Supporting Agencies:	Zoning and Planning Board										
Hazard(s) of Concern:	<div><input type="checkbox"/> Civil Unrest</div> <div><input type="checkbox"/> Dam Failure</div> <div><input type="checkbox"/> Drought</div> <div><input type="checkbox"/> Earthquake</div> <div><input type="checkbox"/> Epidemic</div> <div><input type="checkbox"/> Extreme Temperature</div> <div><input checked="" type="checkbox"/> Flood</div> <div><input type="checkbox"/> Hazardous Materials</div> <div><input type="checkbox"/> Severe Storm</div> <div><input type="checkbox"/> Severe Winter Storm</div> <div><input type="checkbox"/> Terrorism</div> <div><input type="checkbox"/> Transportation Accidents</div> <div><input type="checkbox"/> Utility Interruption</div> <div><input type="checkbox"/> Wildfire</div>										
Description of the Problem:	Frequent flooding events have resulted in damages to residential properties. These properties have been repetitively flooded as documented by paid NFIP claims. The Village has 6 repetitive loss properties and 2 severe repetitive loss properties, but other properties may be impacted by flooding as well.										
Description of the Solution:	The Village will conduct outreach to the impacted properties and will provide information on mitigation alternatives. After preferred mitigation measures are identified, the Village will collect required property-owner information and develop a FEMA grant application and BCA to obtain funding to implement acquisition/purchase/moving/elevating of the affected properties that experience frequent flooding. The parameters for this initiative would be funding, benefits versus cost, and willing participation of property owners.										
Estimated Cost:	Medium										
Potential Funding Sources:	FEMA FMA, FMA SWIFT, Village Budget, County Budget, Property Owners										
Implementation Timeline:	3 years										
Goals Met:	1, 2, 3, 4										
Benefits:	This action would foster comprehensive floodplain management by removing at risk properties from the flood hazard area or elevating properties to reduce the flood risk.										
Impact on Socially Vulnerable Populations:	Collecting data regarding homeowners that reside within flood prone areas provides an opportunity to introduce location-specific opportunities for assistance. Socially vulnerable populations may be able to have houses elevated or acquired when otherwise unaffordable.										
Impact on Future Development:	Increased outreach to homeowners within a flood prone area will limit construction in areas that are prone to hazard events. Homes may be acquired, which will remove those structures from the floodplain and prevent future development on those sites.										
Impact on Critical Facilities/Lifelines:	Removing structures from the floodplain decreases the demand on utilities and emergency services including health and medical, law enforcement, and search and rescue.										
Impact on Capabilities:	Outreach which promotes the removal of risk from the immediate floodplain via acquisition of properties will free up resources for search and rescue and other emergency operations as needed. This action will enhance the Village's current NFIP capabilities.										
Climate Change Considerations:	Climate change is likely to increase the frequency and severity of severe rainfall, flash flooding, and riverine flooding events. Removing structures from the floodplain will reduce the response and recovery costs as a result of these events and decrease the loss of human life as a result of these events. Elevating structures will reduce the recovery costs.										
Mitigation Category	<div><input type="checkbox"/> Local Plans and Regulations (LPR)</div> <div><input checked="" type="checkbox"/> Structure and Infrastructure Project (SIP)</div> <div><input type="checkbox"/> Natural Systems Protection (NSP)</div> <div><input type="checkbox"/> Education and Awareness Programs (EAP)</div>										
CRS Category	<div><input type="checkbox"/> Preventative Measures (PR)</div> <div><input type="checkbox"/> Property Protection (PP)</div> <div><input type="checkbox"/> Public Information (PI)</div> <div><input type="checkbox"/> Natural Resource Protection (NR)</div> <div><input checked="" type="checkbox"/> Structural Flood Control Projects (SP)</div> <div><input type="checkbox"/> Emergency Services (ES)</div>										
Priority	<input checked="" type="checkbox"/> High	<input type="checkbox"/> Medium	<input type="checkbox"/> Low								
Alternatives:	<table><thead><tr><th>Action</th><th>Evaluation</th></tr></thead><tbody><tr><td>No Action</td><td>Current problem exists</td></tr><tr><td>Levee around floodplain</td><td>Costly, not enough room.</td></tr><tr><td>Deployable flood barriers</td><td>Requires deployment. Residents may not have adequate time to deploy, especially those who are elderly or disabled.</td></tr></tbody></table>	Action	Evaluation	No Action	Current problem exists	Levee around floodplain	Costly, not enough room.	Deployable flood barriers	Requires deployment. Residents may not have adequate time to deploy, especially those who are elderly or disabled.		
Action	Evaluation										
No Action	Current problem exists										
Levee around floodplain	Costly, not enough room.										
Deployable flood barriers	Requires deployment. Residents may not have adequate time to deploy, especially those who are elderly or disabled.										



DRAFT